

Tourism , Public Engagement and Green Education

Mayor: Ms. Penpuk Rattanakumfu

Koh Kha Municipality
Lampang Province, Thailand

Koh Kha Municipality

The livable and resiliency city on the contexts of Tourism , Public engagement and Green education



Located	northern part of Thailand	
Type	a medium city with a semi-urban style	
Land Areas (Sq. Km)	Population	Households
4.78	4,763	2,245



The model of "citizen voice for city development" as an open forum for the public hearing in city development activity as well as self-finding on social capital and local wisdom including public participation in city development

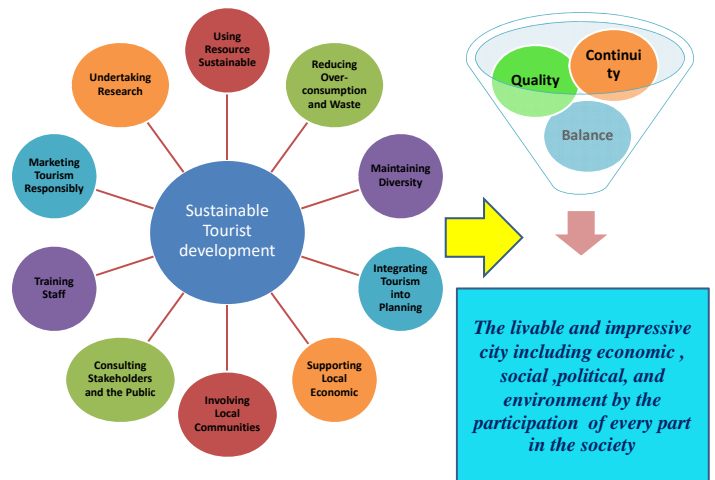
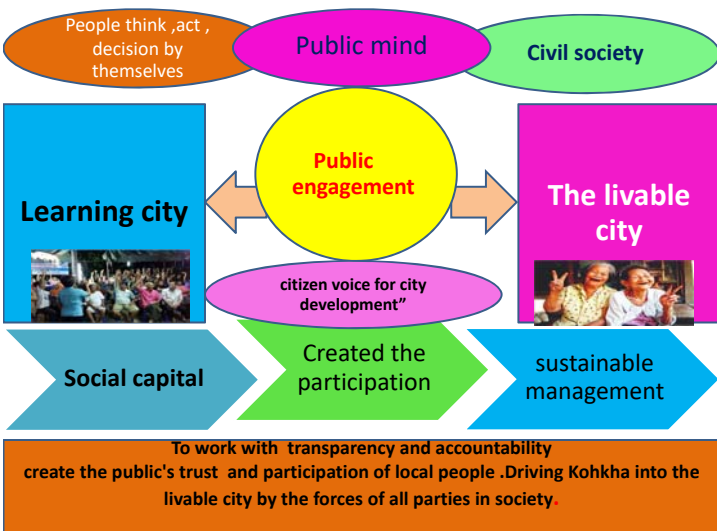


Koh Kha

A Collaborative City for the Balance Happiness in Community within Sustainability development



Creating a livable city with environmental sustainability by Public participation



Concepts and Strategy: Public Engagement



Environmentally Sustainable Management Activities

City Model: Public engagement and Green education



Environmentally Sustainable Management Activities

City Model : Public engagement and Green education



Concepts and Strategy: Design and maintain



Separate waste at every household reduce waste from 10 ton/day to 2.72 ton/day

Change to environmental friendly lifestyle

Home grown organic plantation at least 7 types per household

Organic Agriculture to food security and healthy city



The ways of Kokha

Self-finding on social capital and local wisdom

Public participation And Public awareness

Sustainable development

The livable and resiliency city on the contexts of Tourism , Public engagement and Green education



