

An aerial photograph of a tropical bay, likely in Krabi, Thailand. The water is a vibrant turquoise color, and the surrounding cliffs are steep and covered in lush green vegetation. Several small white boats are visible in the distance, and a larger boat is leaving a white wake in the foreground. The text "Welcome to Krabi" is overlaid in the center of the image.

Welcome to Krabi



**7th High Level Seminar on
Environmentally Sustainable Cities**

Redesigning toward the 2030 Agenda

HA NOI, VIET NAM • 3-4 MARCH 2016



Green Space and Beyond

Krabi Municipality Krabi Province, Thailand

Deputy Mayor: Mr. Channarong Leelaburanapong

Plenary 2: Deepening East Asia's Synergies for ESC Regional
Cooperation to Release the 2000 Agenda

Thursday, 3 March 2016



Located

Type: The landscape consists of low and high mountains crossing with one another. The west is the coastline along the Andaman Sea.

Land Areas (Sq. Km)

19

Population

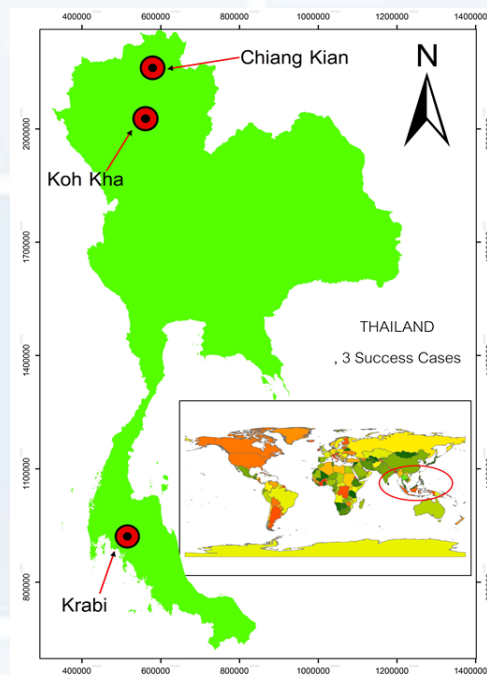
30,313

Hoseholds

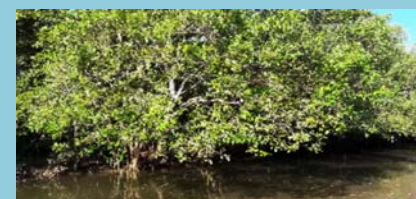
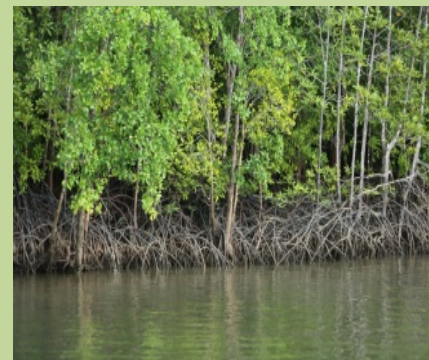
15,551



Krabi Municipality is one of the famous eco-tourism destinations in southern Thailand. The unique identity is local fisherman livelihood along Krabi River. The length of the river is 7 kilometer and consists of 3 water ecosystem: freshwater, brackish water and saltwater.



The existing public green spaces and parks in City



Concepts and challenges regarding designing and maintaining spaces



City's Urban Diversity interpreted in policies/practices related to public green spaces and parks

- Strategies promoting public green spaces and parks
: both for citizen well-being as well as for tourism

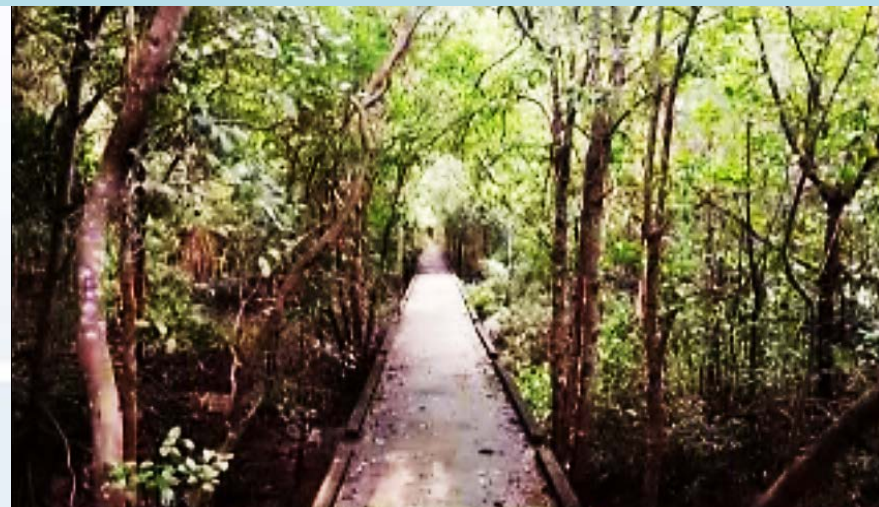
1. Personnel's capacity development

2. Systematic integration of collaboration in the organization

3. Promote public participation and participation of related agencies

4. Creating network

5. Regulate the use of land



Strategies in City Development (cont.)

6. Restore the city identity and culture

7. Creating awareness and public mind

8. Promote economic prosperity by applying the Philosophy of Sufficient Economy

9. Good governance administration and management

10. Dissemination

11. Upgrade to model site and learning source



The Application of City Development Strategies for Sustainable Management of Natural Resources and Environment

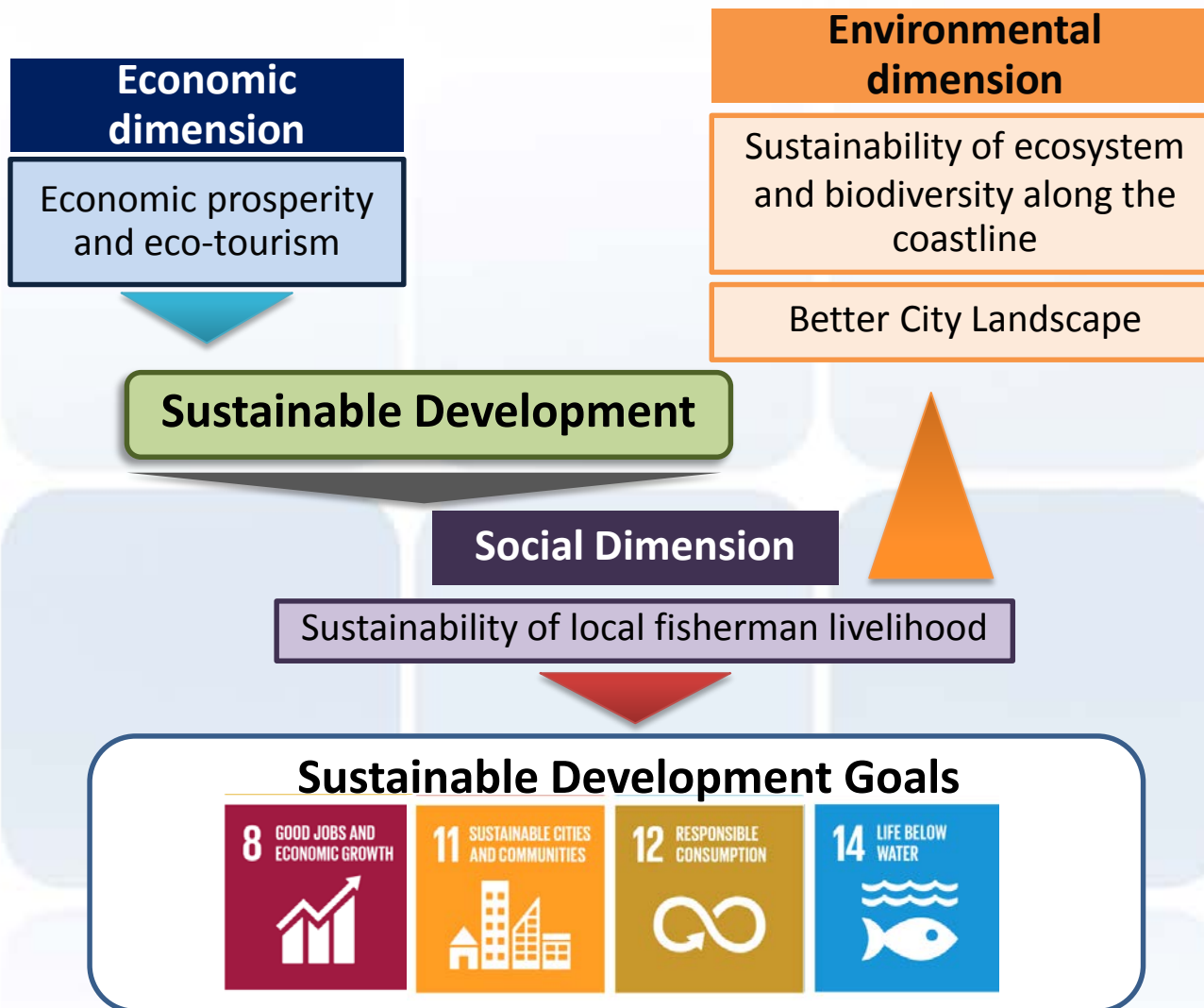
- The need to rely on nature, abundant ecosystem and coastline resources to promote economic prosperity in the areas of tourism, culture and local fisherman livelihood.
- Integration of thoughts “Management for sustainable Environment” and “Eco-tourism” based on the local people’s ways of life and culture through the following activities:
 - Conservation of wetlands
 - Effective management of pollution and waste
 - Increase green areas
 - Environmental studies by designing local curriculum in natural resource and environment management
 - Promoting environment-friendly lifestyle

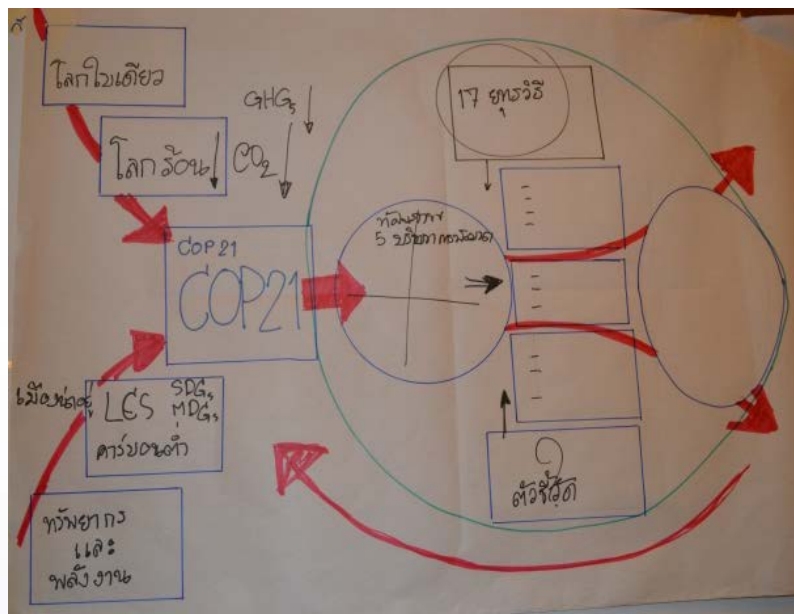




Where we are in SDGs?

Outcomes





Sustainable Society Index	Human Wellbeing	Basic Needs	<ol style="list-style-type: none"> 1. Sufficient Food 2. Sufficient to Drink 3. Safe Sanitation
		Health	<ol style="list-style-type: none"> 4. Education 5. Healthy Life 6. Gender Equality
		Personal & Social Development	<ol style="list-style-type: none"> 7. Income Distribution 8. Population Growth 9. Good Governance
	Environmental Wellbeing	Natural Resources	<ol style="list-style-type: none"> 10. Biodiversity 11. Renewable Water Resources 12. Consumption
		Climate & Energy	<ol style="list-style-type: none"> 13. Energy Use 14. Energy Savings 15. Greenhouse Gases 16. Renewable Energy
	Economic Wellbeing	Transition	<ol style="list-style-type: none"> 17. Organic Farming 18. Genuine Savings
		Economy	<ol style="list-style-type: none"> 19. Gross Domestic Product 20. Employment 21. Public Debt

ECONOMICS

Production & Resourcing
Exchange & Transfer
Accounting & Regulation
Consumption & Use
Labour & Welfare
Technology & Infrastructure
Wealth & Distribution

Organization & Governance
Law & Justice
Communication & Movement
Representation & Negotiation
Security & Accord
Dialogue & Reconciliation
Ethics & Accountability

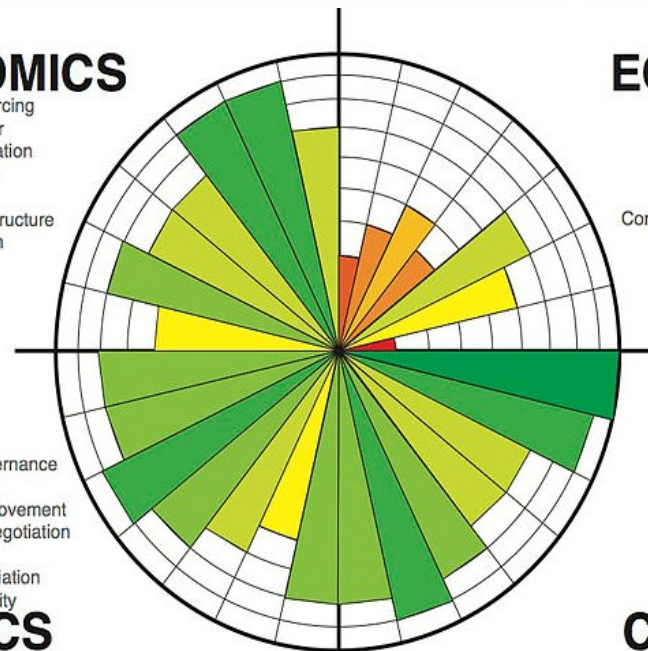
POLITICS

ECOLOGY

Materials & Energy
Water & Air
Flora & Fauna
Habitat & Food
Place & Space
Constructions & Settlements
Emission & Waste

Engagement & Identity
Recreation & Creativity
Memory & Projection
Belief & Meaning
Gender & Generations
Enquiry & Learning
Health & Wellbeing

CULTURE



Background and Application of the SDGs



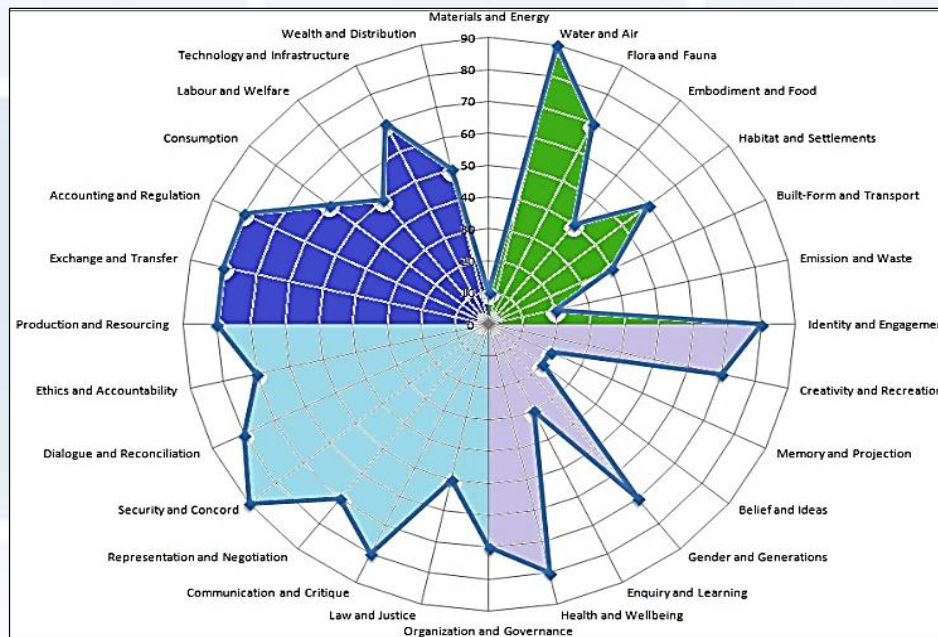
Social aspect of sustainable development (equity and equality)



SDGs' unfinished tasks



Challenges raised by the limits of the Earth System



Innovation and game-changing ESC practices/policies Local and Regional

Conservative Tours learning center



Cultural and Park learning center



Wetland conservation



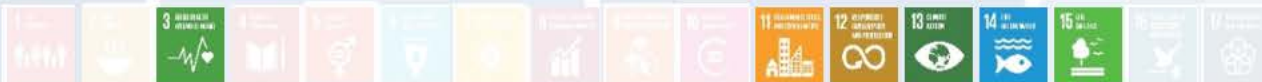
Green Areas



Prepare Local course about resource and environmental management



Promoting Eco Friendly Lifestyle with environmental



Ecotourism



Artisanal fishery



Pollution and Waste management efficiency



Our Community has contributed to:

Eco-tourism



Self-sufficiency economy



Ecological / wet land & Ramsa Site



Promote networking, cooperation and knowledge exchange among key ESC

(governments, academia, civil society, international organisations, private sector etc.)



Thank you

