

Building Urban Climate Change Resilience in Southeast Asia

Presented by
Vic Aquitania
Regional Director
ICLEI Southeast Asia Secretariat



What is ICLEI?



- Was founded in 1990 as the “**International Council for Local Environmental Initiatives.**”
- In 2003, the organization became “**ICLEI - Local Governments for Sustainability**”
- An international **association** of local governments and national and regional local government organizations that have made a **commitment to sustainable development**
- The world’s leading network of over 1,000 cities, towns and metropolises

What is ICLEI?

*Connecting
leaders*



*Accelerating
action*



*Gateway
to solutions*



ICLEI's Agendas



Sustainable City



Resilient City



Biodiverse City



Low-carbon City



Resource-efficient City



Smart Urban Infrastructure



Green Urban Economy



Healthy and Happy Community

ICLEI Offices



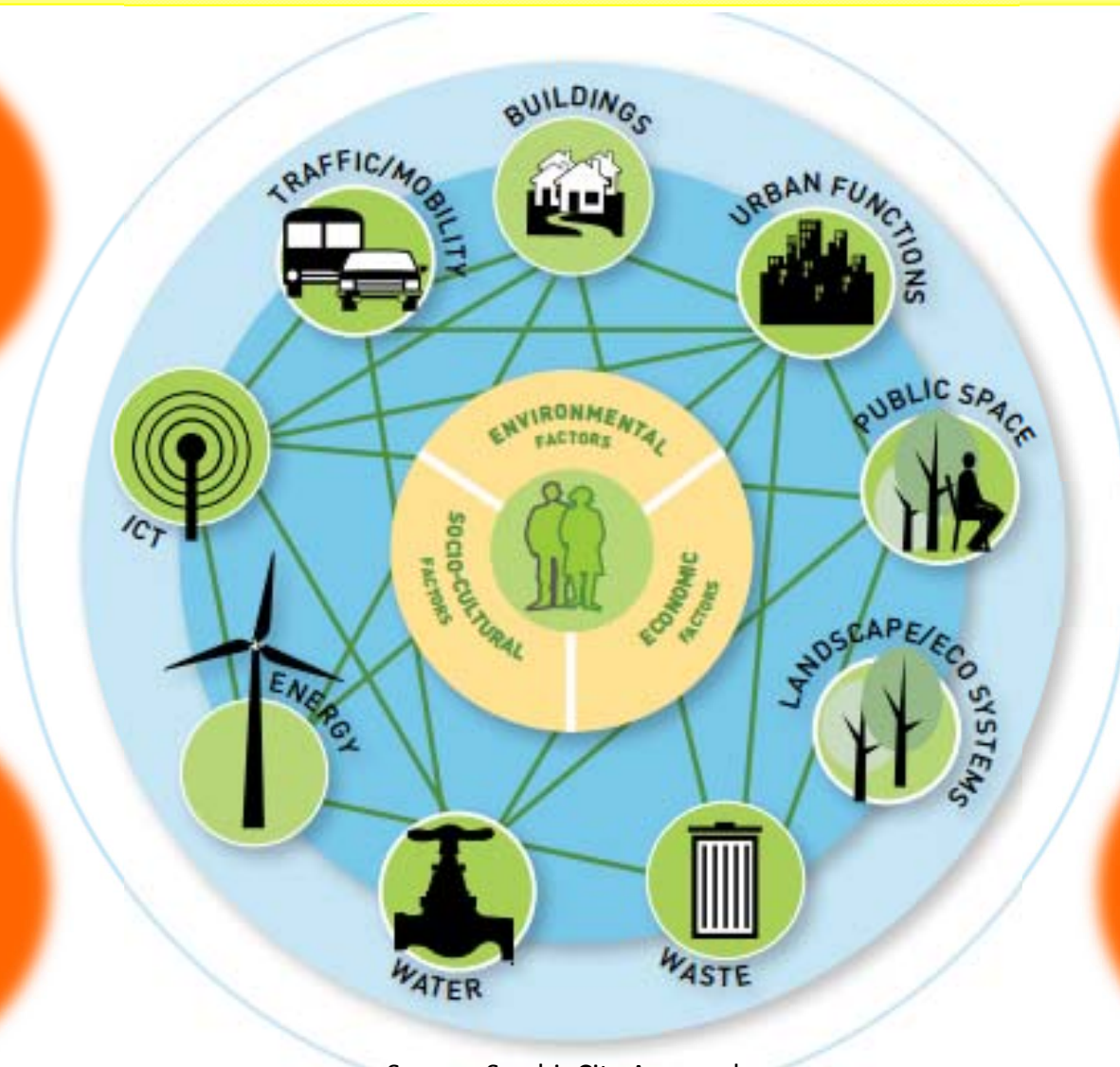
LG as a complex system of systems

Population
Growth

Changing
Global
Environ-
ment

Rapid
Urbaniza-
tion

Unsustaina-
ble use of
resources



Source: SymbioCity Approach

Why Cities & CCA?



Urbanization contributing to drivers of climate change –

- land use change
- demand for energy
- demand for resources

Opportunity for Action on CCA

- most people
- most power
- significant climate risks

Maybe after
the
elections ...

Let's wait
and
see ...

Climate
change ...
what's next?

Tell me
something
new ...

Nobody
really knows
what will
happen
anyway.

Not for us
here in this
city - much
too
expensive

?

We've got
enough
other
priorities in
our city!

The second time this
year that all major
roads are flooded - but,
sorry: nothing that the
city can do about it.





to bridge the gap!

ACA, Youth and Women on CC, Teachers Training on
CC, Sub-Regional Node for the APAN and ACCCRN

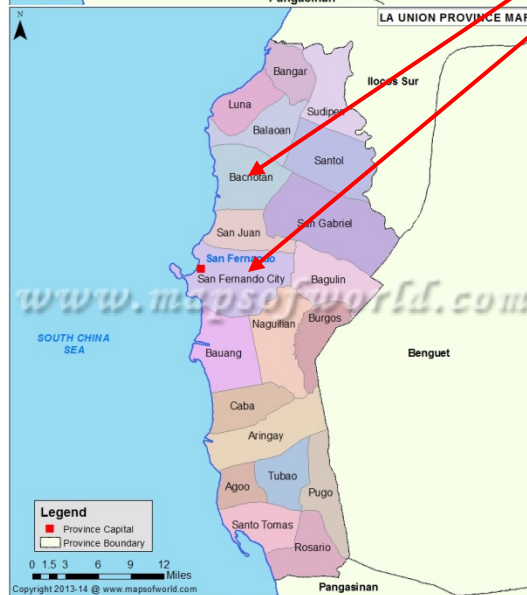
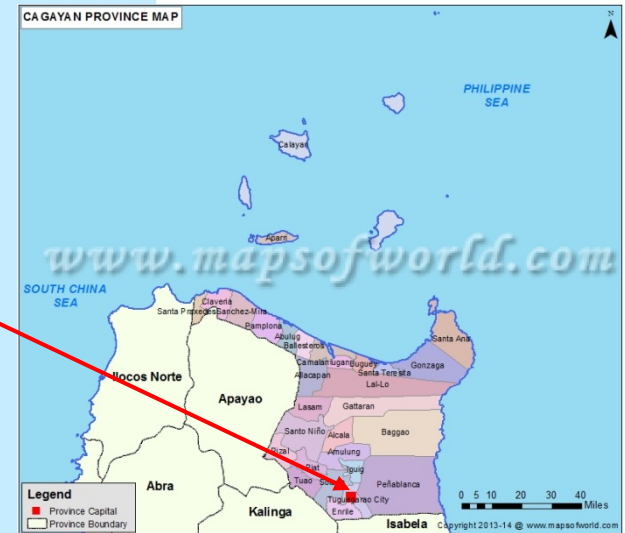
ACCCRN Local Governments Units



Source: en.wikipedia.org



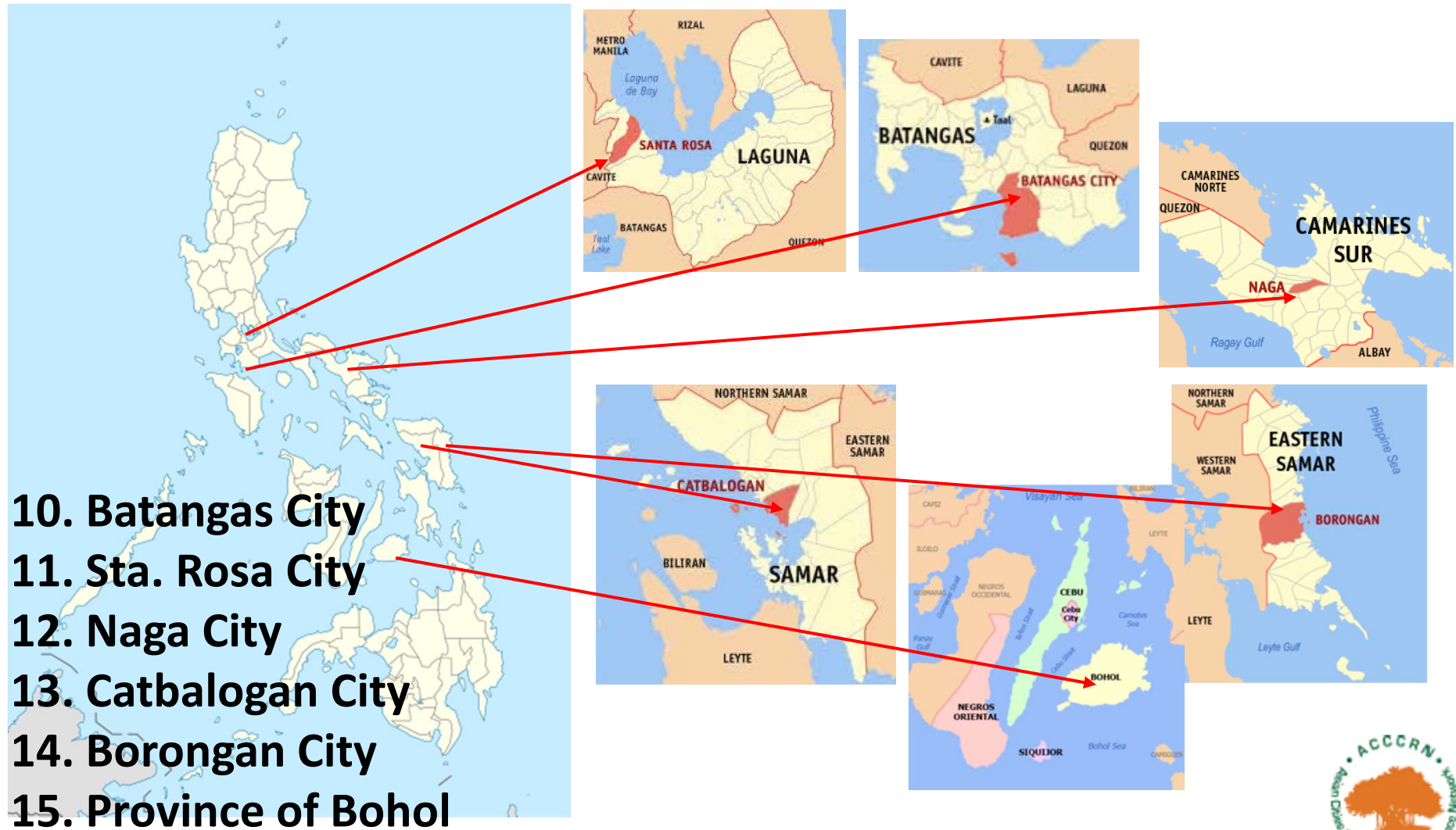
ICLEI
Local
Governments
for Sustainability



- 
4. **Baguio City**
 5. **Tublay, Benguet**
 6. **La Trinidad, Benguet**
 7. **San Fernando, La Union**
 8. **Bacnotan, La Union**
 9. **Tuguegarao City**



ACCCRN Local Governments Units



ACCCRN Cities in Indonesia



But: cities can't do it
alone!

Challenges :

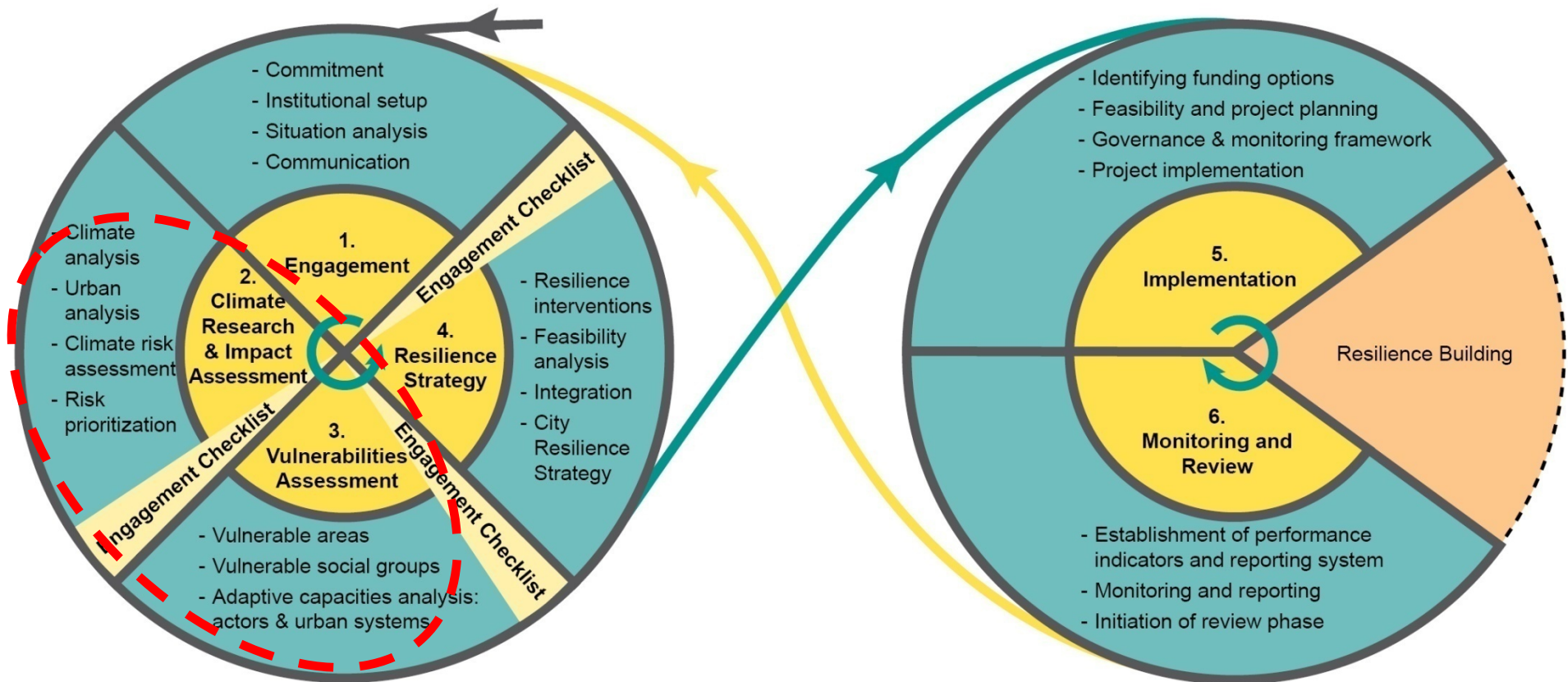
- ✓ Limited capacity of city staff to conduct supporting research such as vulnerabilities assessment etc .
- ✓ Limited resources to fund climate resilience actions
- ✓ Political challenges. CRS need to be approved by local parliament to be integrated into ongoing Developmental Planning Document
- ✓ Difficulties to put private sector on the process, regarding its unique position on climate change issues : as “actors” and as “victim”

Implementing the UCCR Process

- **Clustering approach** – invite adjacent local governments (LGs) to participate in workshops as observers of the ACCCRN process
- **Coordination with other entities working on resilience** – may include national government agencies, academe, NGOs
 - Assistance from the *Local Government Academy (LGA)* in identification of Philippine ACCCRN cities
 - Partnership with *University of the Philippines – Los Baños* in the conduct of GIS training for ACCCRN cities
- **Integrating existing initiatives and tools in the UCCR**
 - **Climate Budget Tagging** of the CCC, DILG, and DBM, with support from World Bank
 - **Asset management** of TSJ Consulting and
 - **CDIA Prioritization Toolkit**



ICLEI ACCCRN Process: New Avatar



Set of 16 tools, refined through trial as well as internal and external review

Mosque Based Rain Water Harvesting Installation



Climate Forecast Application for Agriculture

Climate and Weather Forecasting

In the field of Agriculture, has been in demand due to its efficiency in crop patterns and rotations in the recent years, which resulted to increased farm productions.



Adapting to climate and weather changes can be highly beneficial in farming, by obtaining and understanding the right information that can help farmers to produce and earn more.



Tree Planting by the Youth

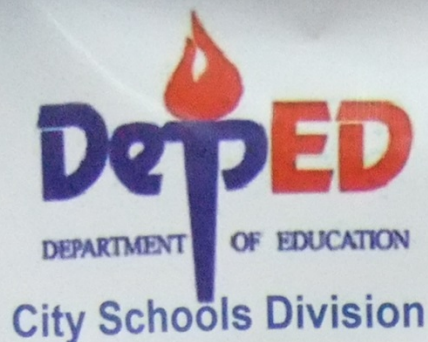


Peer to Peer Learning Exchanges



Mobile Health Clinic





TEACHER'S TRAINING ON CLIMATE CHANGE

The City Government of San Fernando, La Union
and City Schools Division- DepEd 1 with support from
ICLEI Japan Office and ICLEI Southeast Asia

South Central School
City of San Fernando, La Union
25-26 October 2012

Youth Action on Climate Mitigation, Adaptation and Disaster Risk Reduction



Key Points from Philippine Experience

- **Data access and availability** – absence of relevant, up-to-date, and quality data; fragmented sources of data
- **High awareness of LGs on resilience but skewed toward DRR** – communities readily see the impacts of DRR initiatives; enabling framework to mobilize resources for DRR already existing
- **Vertical and horizontal integration** – simultaneous work at the national and sub-national level; issues on fragmented resiliency initiatives
- **LGUs are willing to co-fund and allocate resources for resiliency initiatives.**
- **Some LGUs tend to protect their image**, affecting their risk assessment.

Key points from Indonesia Experience

- ✓ Political commitment with formal MoU :
 1. Cities with formal MoU on ACCCRN has more progress than other cities without/not have MoU yet.
 2. The MoU secure the process will be attended by people from various agencies
 3. The MoU secure funding from local budget to support the process

We will not
only survive,
we will adapt...



© Yumul, 2012

● Thank you for listening.



seas.iclei.org



www.facebook.com/ICLEISEA



www.twitter.com/icleisea