



THINK DIFFERENTLY

SUSTAINABLE TOURISME

**LOW CARBON CITY , A CASE STUDY
IN WAKATOBI**



Ir. HUGUA
Regent/ Mayor of Wakatobi



© 2007 Europa Technologies

Image © 2007 TerraMetrics

© 2005

Go

THE MAP

SOUTH EAST SULAWESI POVINCE INDONESIA

INDONESIA

Jakarta

Bali

Kendari

Wakatobi

Wangi Wangi

Hoga

Kaledupa

Lentea

Ndaa

Karang Koromaha

Tomia

Tolandona

Tokobao

Cowo Cowo

Binongko

Tengah

Kambodo

Sumangali

Kampenaune

Karang Kapota

Karang Kaledupa

South East Sulawesi

Kendari

Wakatobi

WAKATOBI ISLANDS

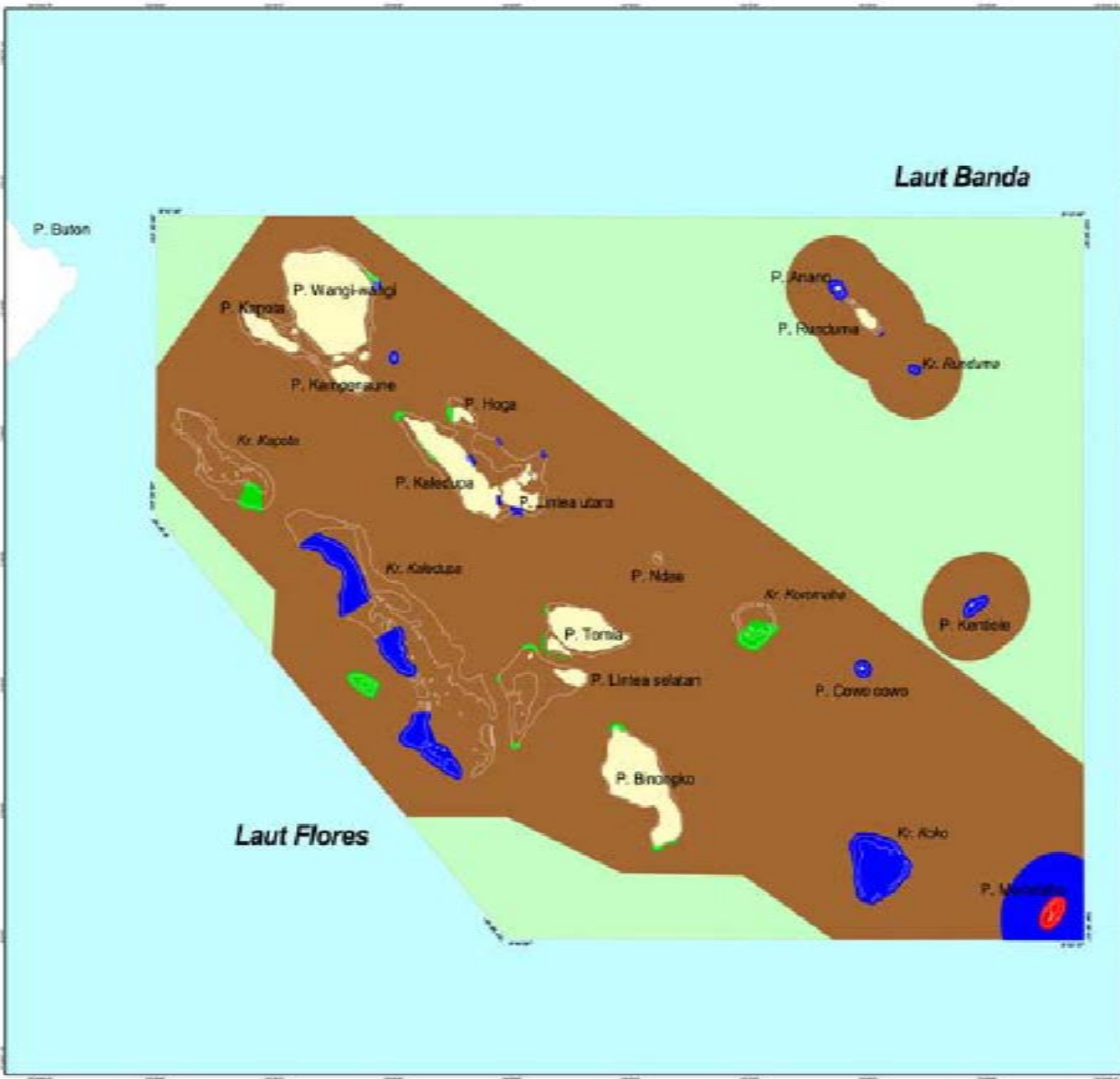
WANGI WANGI

KALEDUPA

TOMIA

BINONGKO





WAKATOBI AT A GLANCE

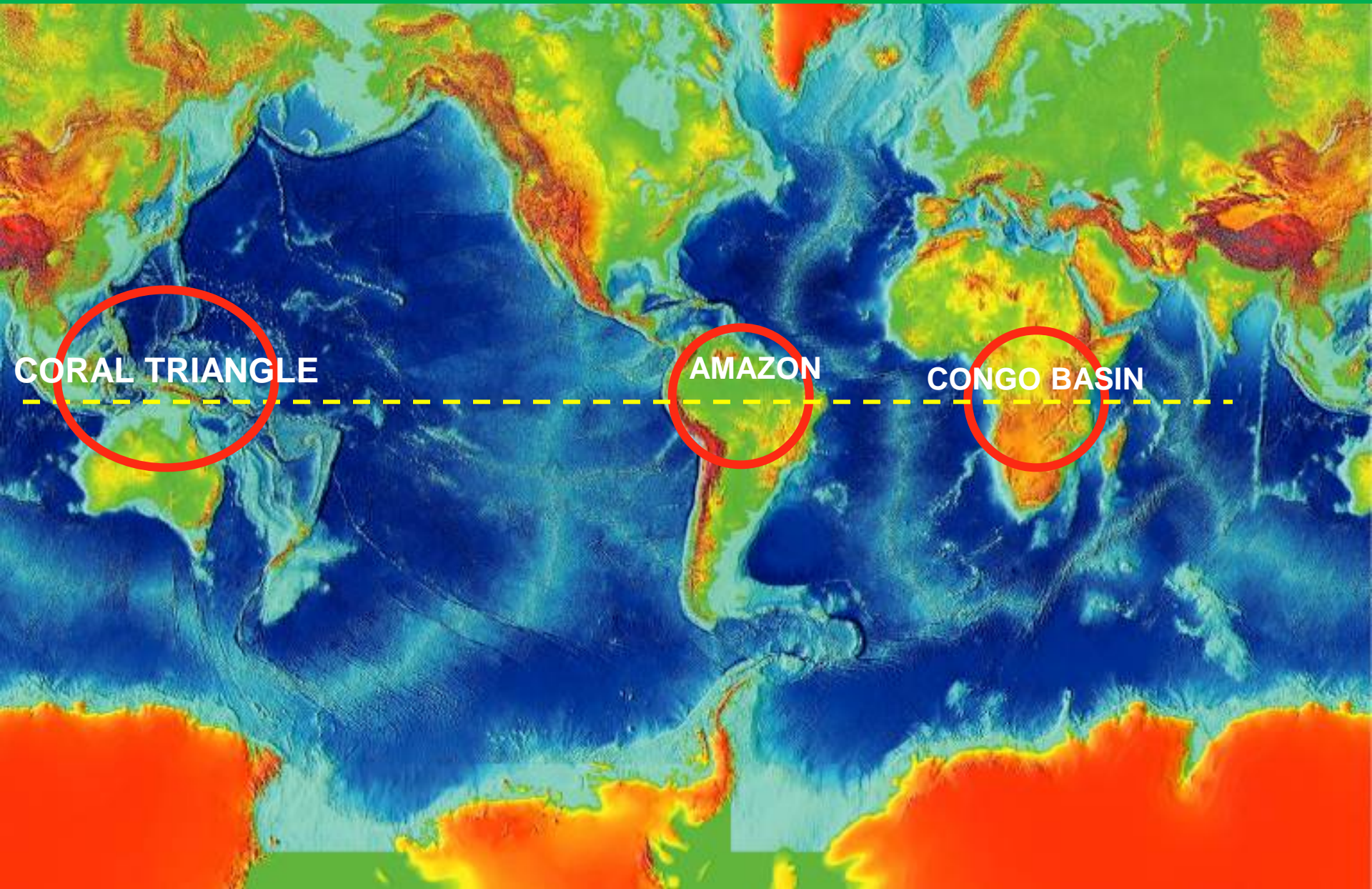
- ❖ Stated as new district on December 2003 (UU No. 29 2003)
- ❖ Abbreviation from the four big islands: Wangi-Wangi, Kaledupa, Tomia dan Binongko
- ❖ Area 1,4 million ha (which is 97 % marine area, 3 % land)
- ❖ Has 142 islands (7 inhabited islands)
- ❖ Population 111.423 which has annual population growth 1.72 %



Geopolitic and Geography of Wakatobi

1. Center for Coral Triangle
3. Biosphere Reserve VIII (UNESCO 11 Juli 2012)
4. The Golden Rote of the Yach Rally International
- 5, The only Way in / out of Marine route to eastern part of indonesia

Three most diverse Ecological Complex on the World: one of which is Coral Triangle



CORAL TRI-ANGLE CENTER

A map of Southeast Asia showing the Coral Triangle region. The landmasses are colored light green, and the surrounding waters are colored light red. The region is roughly triangular, with vertices at the Philippines, Indonesia, and Papua New Guinea. A small red square is located in the Indonesian archipelago, specifically in the Sulu Sea area.

➤ As the highest marine biodiversity area in the world

➤ 750 coral species, 942 species of fishes,

➤ Has 118.000 ha area of coral reef

➤ Kaledupa atoll (48 km) is the longest atoll in the world

THE HEART OF THE CORAL TRIANGEL DIVERSITY

Comparing 3 diving centers in the world:

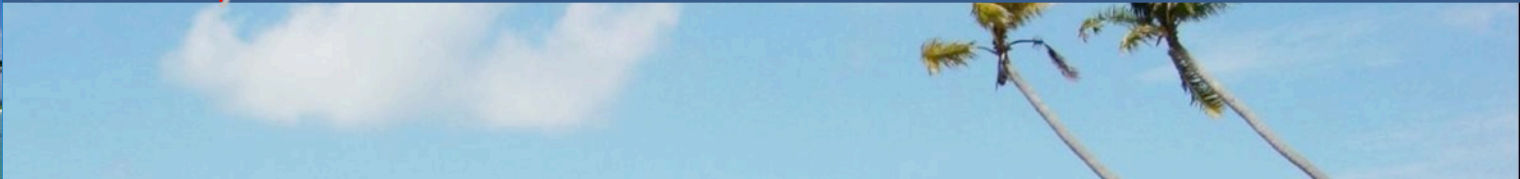
- Carribian : 50 species
- Red Sea : 300 species
- Wakatobi : 750 species

Number of coral species in the world : 850 species

Wakatobi is the most potential and incomparable diving destination

(Source: Operation Wallacea)

WAKATOBI JUST DECLARED AS NEW BIOSPHERE RESERVE BY UNESCO in MIB 24 Conference at HQ, Paris Juli 12, 2012



National Committee of
Man and the Biosphere
Indonesian Programme



WAKATOBI REGENCY WAKATOBI NATIONAL PARK



MINISTRY OF FORESTRY

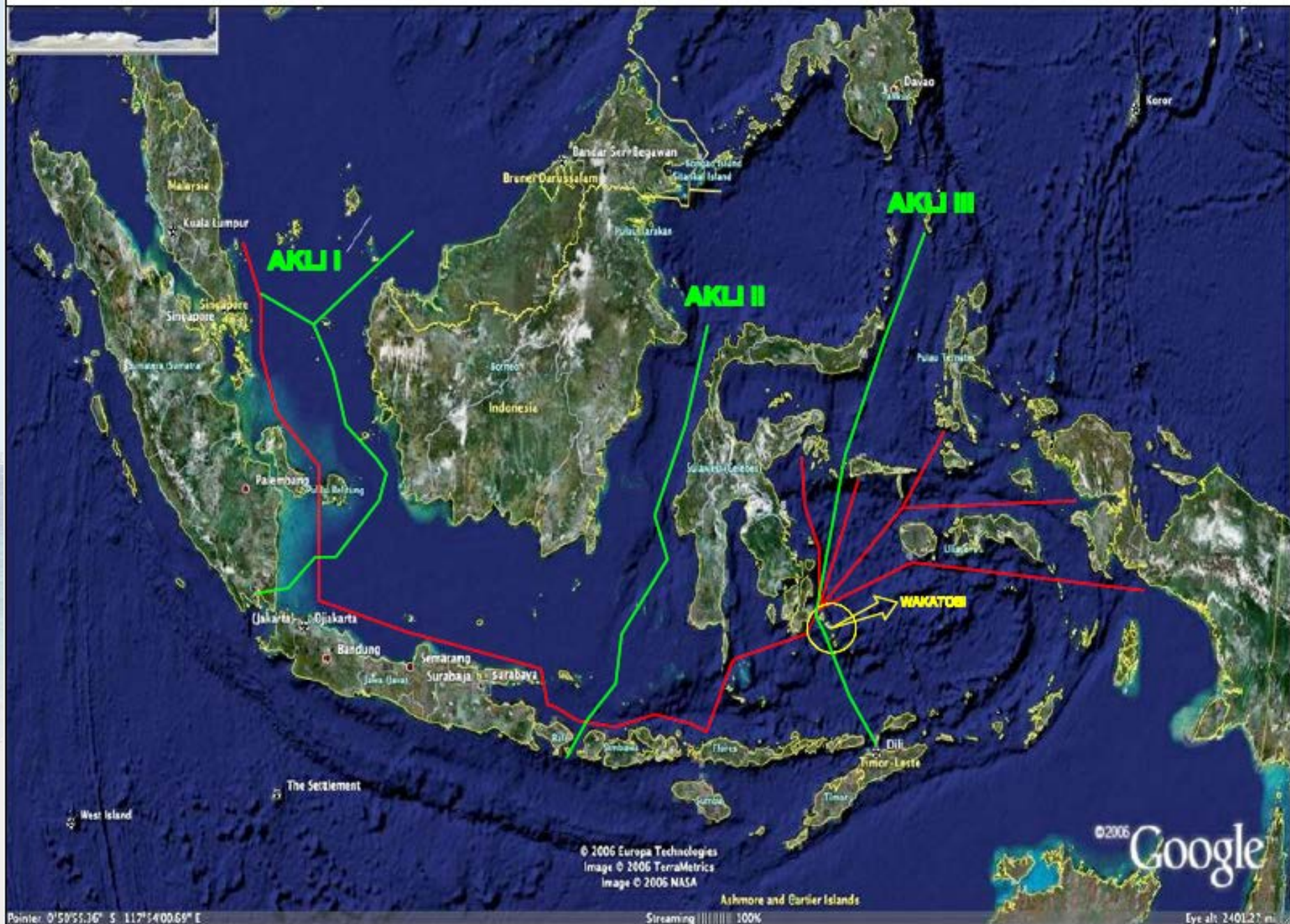


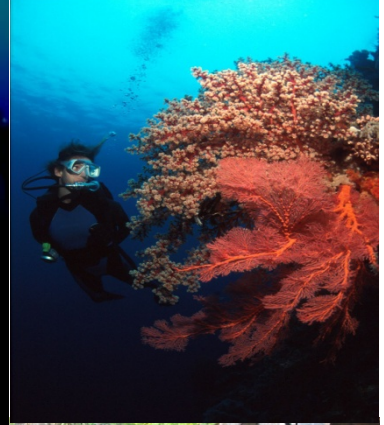
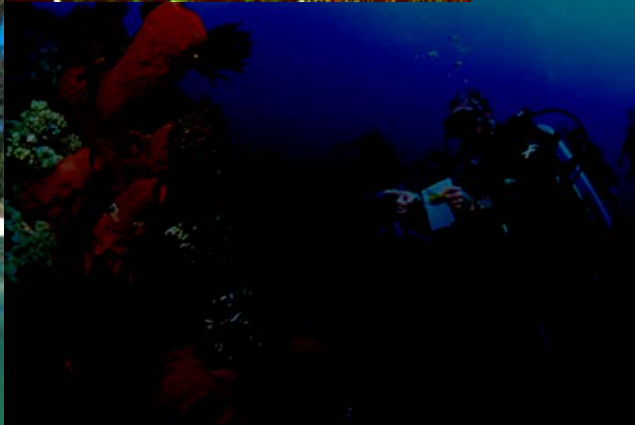
UNESCO mendeklarasikan Wakatobi sebagai Cagar Biosfer (12 July 2012), memiliki jaringan dengan 621 Cagar Biosfer lainnya yang tersebar pada 117 Negara.

Wakatobi is a Passage Route of Sail Indonesia



JALUR TRANSPORTASI LAUT TRADISIONAL





Leading sector are :
❖ Fisheries and
Marine
❖ Tourism

FISHERY ASSET

- FISH :
 - Tuna, Pelagic, Groper, Lobster, and other ornamental Fish.
- Seaweed
- Mangrove
- Etc





© Michael Sjukrie, Pemda Wakatobi



© Toga Tampubolon, Pemda Wakatobi



© Irwan Sandrady, Pemda Wakatobi



© Ebram Harimurti, Pemda Wakatobi



© Bambang Sugiantoro, Pemda Wakatobi



© Sofi Aida Sugiharto, Pemda Wakatobi



© Eddy S., Pemda Wakatobi



© Muljadi Pinneng Sulung Budi, Pemda Wakatobi



© Hendry D. Berry, Pemda Wakatobi

Tourism Asset



CULTURAL HERITAGE AND ATTRACTION

- ❖ KARIA
- ❖ SOMBO/HEPUNDAA
- ❖ BANGKA MBULE-MBULE
- ❖ KABUENGA
- ❖ RITUAL DUATA
- ❖ SILAT
- ❖ LAREANGI DANCE
- ❖ SAJOMOANE DANCE
- ❖ BALUMPA DANCE
- ❖ HONARI MOSEGA DANCE
- ❖ POSEPA
- ❖ HEKANSALU
- ❖ PERKAMPUNGAN SUKU BAJO
- ❖ LIYA TOGO FORT
- ❖ OLLO FORT
- ❖ PATUA FORT
- ❖ OLD MOSQUE OF LIYA TOGO



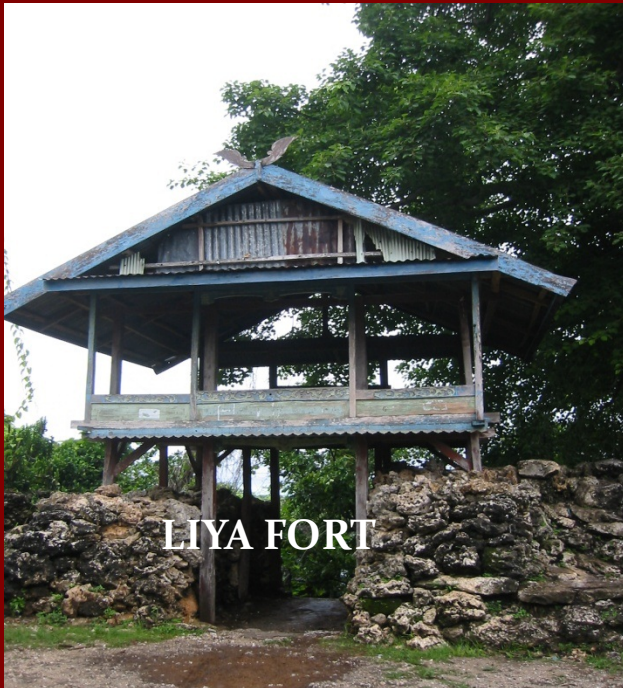


DIVERSITY OF CULTURE

ANCIENT CULTURAL HERITAGE



**OLD MOSQUE OF
LIYA TOGO**



LIYA FORT



HAT OF KASAWARI – KINGHDOM SOLDIER



OLD KNIFE

The wakatobi Development Principal

1. As National Park Should make prosper it's area than earning life from park prosperity
2. Environment balance is the based of policy making (sustainable)
3. Human being is the only creature who determines the future life of Wakatobi, Jakarta, Kualalumpur , or the earth = high culture value (Civilization)

SUSTAINABLE TOURISM FORMULA

SUSTAINABLE TOURISM = BALANCED
ENVIRONMENT + HIGH LEVEL CULTURE
VALUE

=

Habit to Generate

Habit To Generate will create



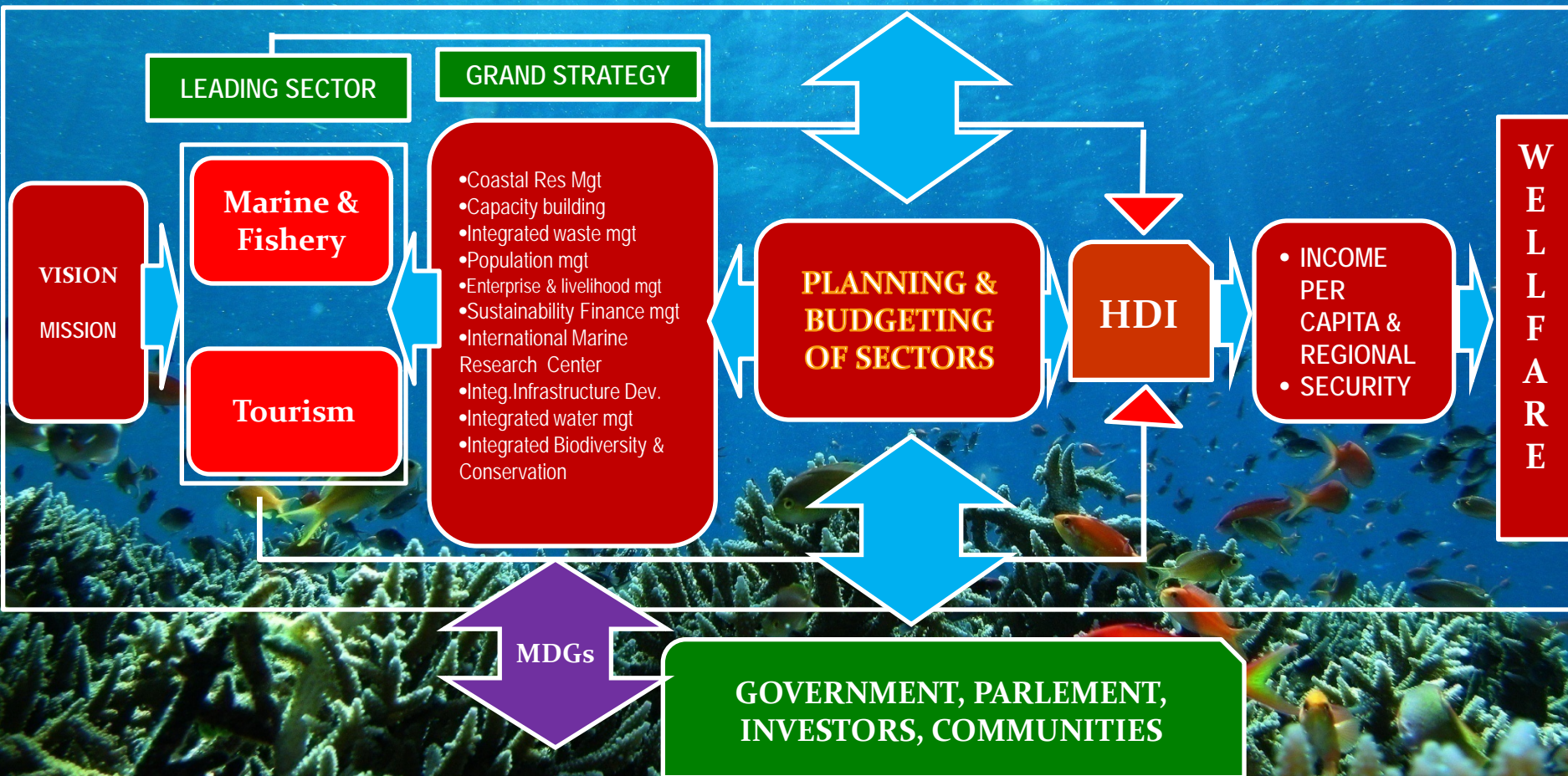
**Peaceful Civilization and
balanced environment**

WAKATOBI VISSION

THE ONLY REAL UNDERWATER
PARADISE / HEAVEN AT THE
HEART OF CORAL TRIANGLE

FRAMEWORK OF WAKATOBI SUSTAINABLE AND ENVISION DEVELOPMENT

JICA, UNDP, CIDA, WORLD BANK, ADB,
WWF/TNC, USAID, AUSAID, GTZ, NOAA,
LEAD, NGO, UNIVERSITY, etc





**IMPLEMENTATION OF LOW CARBON CITY
IN WAKATOBI**
Under DEGOLSEA Scheme

The Goal of LOW CARBON CITY in Wakatobi:

- **The clarity of Wakatobi sea water and its ecosystem is sustained to support the Sustainable Development of Wakatobi**
- **Wakatobi become a new Best Practice Site, which the best on Integrated Waste Management (Learning Center)**

MANAGEMENT STRATEGY

1. Promoting awareness and change of community 's attitude
2. Enhancing coordination and integration amongst stakeholder
3. Developing regulations and facilities of waste processing area (*Learning Center*)



There are 3 Main Activity

Integrated Waste Management

- Voluntary work together (every Saturday)
- Price haji/umrah (6 couple a year)
- Learning center/ waste processing

.Tree and Coral re-planting

- City and urban reforestation (1000 ha in city)
- City Park construction
- Coral rehabilitation

.Empowering Tribal Leader (Tokoh Syara)

- Local social tradition value
- Key succes of community involvement
- Information dissemination trugh traditional media, mosque , etc



Learning Center

Integrated Waste Management

Wakatobi Regency



STAKEHOLDER INVOLVEMENT:

Role and Function of Stakeholder

No.	Institution	Main Function
1.	Regent dan Parlement	Making a Policy and Finance support
2.	Team works	Node of Multy stakeholder coordination, Monitoring dan Evaluation
3.	Regional Planning Board	Secretariat of Team Work
4.	Office of Cleaning and Spatial	Socialization and infrastructure development, operational of waste management (land-based)
5.	Office for Environment	Socialization and infrastructure development, operational of waste management (sea-based)

PROGRAM AND ACTIVITY

Program	Activities
Promote awareness and Change of Community' s Attitude	<ul style="list-style-type: none"> ▪ Increasing of awareness on waste at school level (canal spy, clean Saturday movement, garbage bank, and integration waste management into local content.) ▪ Promote awareness on waste management at community levels (socialization, clean Saturday movement, Friday prayer, publication via media, free of plastic waste movement, etc); ▪ To stimulate community' s attitude change through Income Generation Activities (training on small industry waste material-based)
Enhancing coordination and integration amongst Stakeholder	<ul style="list-style-type: none"> ▪ Carry out meeting to improve coordination and evaluation of the program progress; ▪ Formulate share recommendation for improvement and successful of programs. ▪ Establishment of forum for partnership in waste management (Forum KOMPOS) at Village Level.
Developing regulations and facilities of <i>Learning Center</i> .	<ul style="list-style-type: none"> ▪ Produce local regulation on waste management, Strategic Planning of integrated waste management, Village regulation on waste management; ▪ Technical guideline of waste management; ▪ Construction of infrastructure of waste management;

ROLE AND FUNCTION OF STAKEHOLDER

No.	Institutions	Main Function
6.	Office for education	To promote awareness on waste management at school level
7.	Office for Health	Awareness and developing environmental sanitation facilities
8.	Office for Public Work and Energy	Construction of Infrastructure of environmental health (Drainage, toilets, Control dumped and access road to learning center site.
9.	Office for Industry, cooperative and small business	Increasing of community income through utilization of waste materials (handy crafts, E.M and Grease trap)
10.	Office for transportation and Information	Publication via media about promote awareness on waste management e.g. socialization of waste management, etc.

ROLE AND FUNCTION OF STAKEHOLDER

No.	Institutions	Main Function
11.	Office for Agriculture/Forest	To promote community awareness through Training on Making and Usage of Compost and forest replanting at household level
12.	Office for Tourism and Culture	To promote community awareness through develop Atraction
13.	Office for Marine and Fishery	To promote community awareness for the waste management and its impact to sea ecosystem to fishery and busines
14.	Sub-district	Organizing the village community trough local organization such as : village staff, PKK, Dasa Wisma youth organization, tribal leader and religious leader in healthy waste management.
15.	Media	Publication to encourage public awareness in mass coverage

ROLE AND FUNCTION OF STAKEHOLDER

No.	Institution	Main Function
1	2	3
16.	NGO/ Tribal Leader	Organizing the community to stimulate or motivate the participation and community awareness on the benefit of waste management to community.







GERAKAN WAKATOBI BERSIH (WASH)



indahnyanya kalau jernih begini lautnya kita



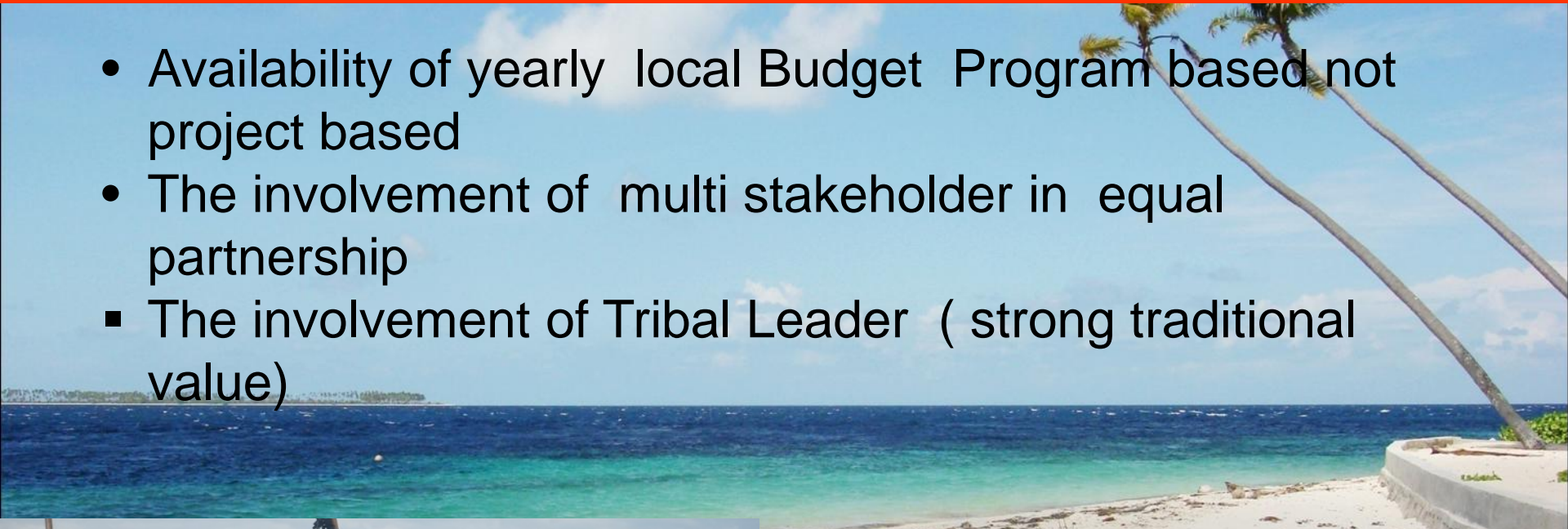
mari wujudkan lingkungan kita bebas sampah

Dinas Tata Ruang, Kebersihan, Pertamanan, Pemakaman dan Pemadam Kebakaran



The Key of Sustainable :

- Availability of yearly local Budget Program based not project based
- The involvement of multi stakeholder in equal partnership
 - The involvement of Tribal Leader (strong traditional value)















PYGMY SEAHORSE



SAIL WAKATOBI BELITONG 2011



PATUNO RESORT







Thank You

