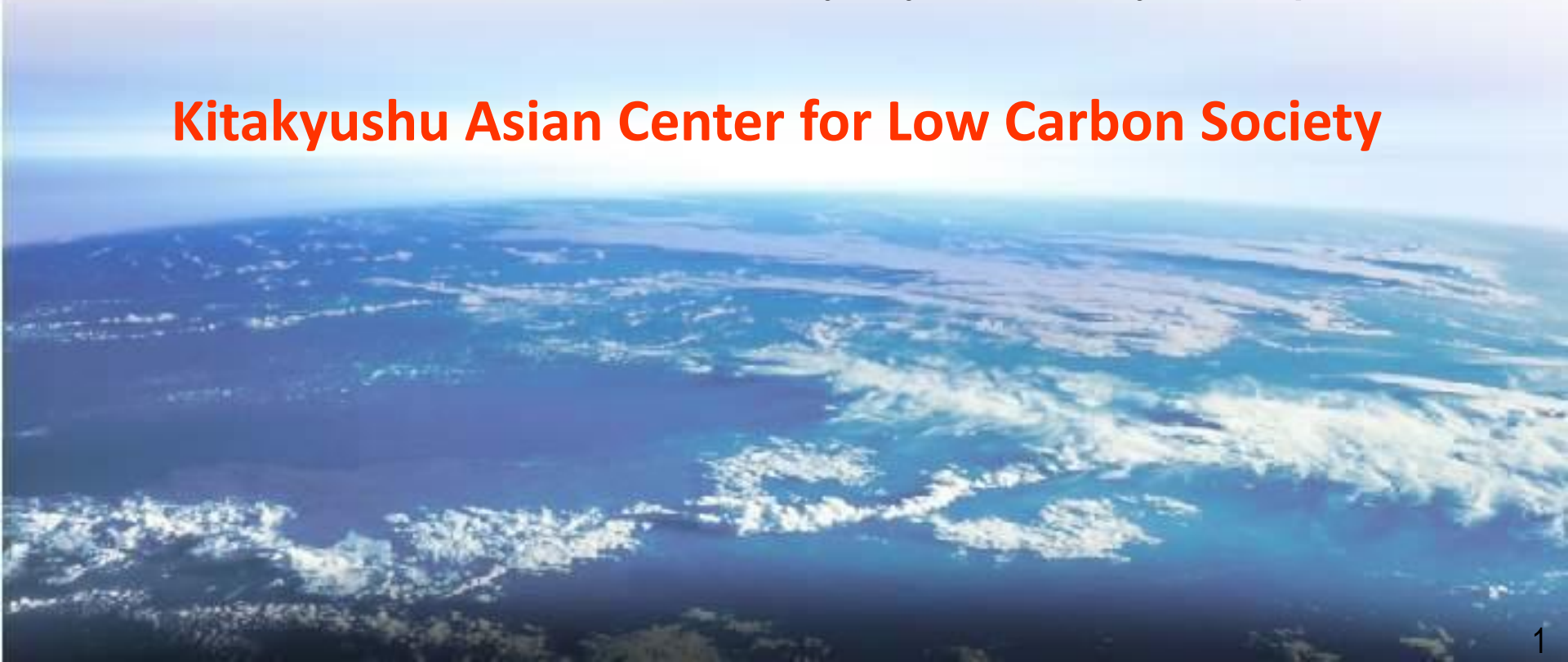


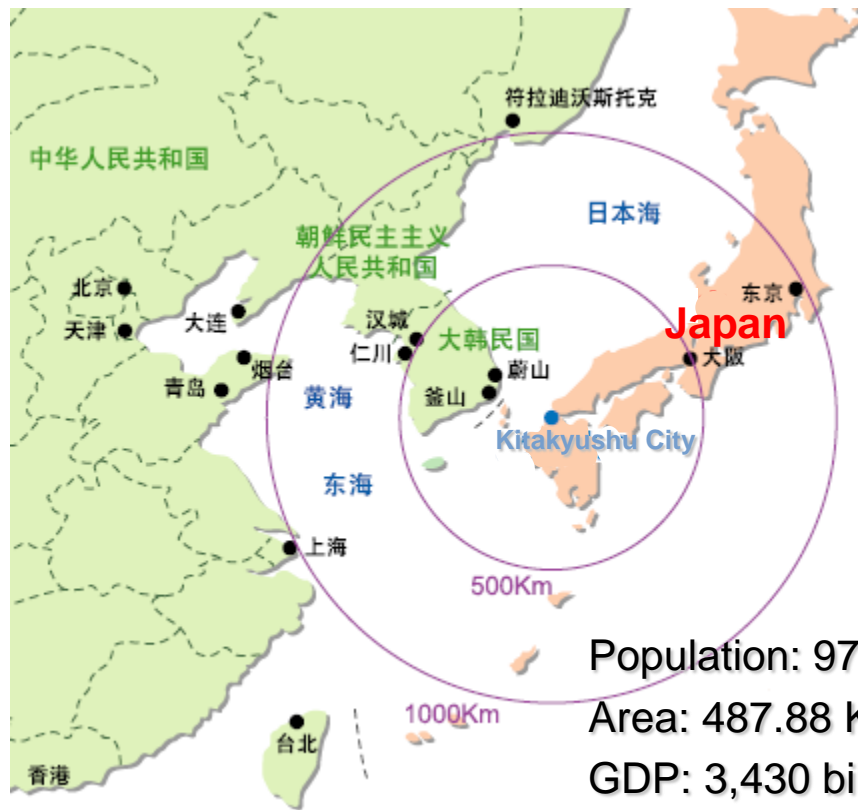
# THE 5th HIGH LEVEL SEMINAR (HLS) ON ENVIRONMENTALLY SUSTAINABLE CITIES (ESC)

MSW management policies and practices and  
Promotion of the Green City by Intercity Cooperation

**Kitakyushu Asian Center for Low Carbon Society**



# City located near to other Asian nations, rich in nature, and developed as a manufacturing area



Population: 977,000 (2010)

Area: 487.88 Km<sup>2</sup>

GDP: 3,430 billion yen (2010)

## Rich nature and branded food materials



Karst Plateau Hiraodai



Wakamatsuhoku Beach



Ouma Bamboo Shoots



Kanmon Straits Octopuses



Kokura Beef



Buzen-Sea Oysters

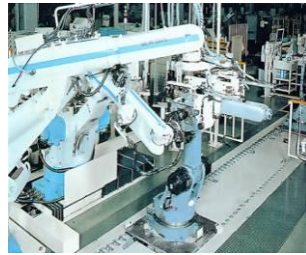


Wakamatsu Special Tomatoes

## Major companies in Kitakyushu area



Nippon Steel Corporation



Yasukawa Electric Corporation



TOTO Ltd.



Mitsubishi Chemical Corporation



Toyota Motor Corporation · Nissan Motor Co., Ltd.

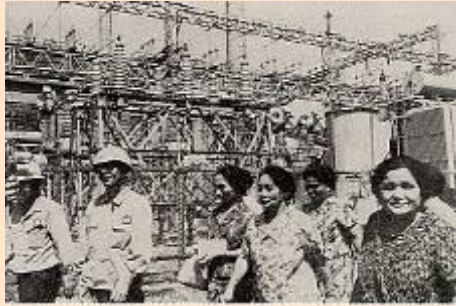


Mitsubishi Materials Corporation



# Regional resources

## Experience with overcoming pollution problems



Company visit by citizens

Citizens

Partnership

Government

Companies



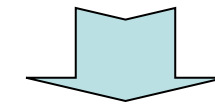
Reinforcement of restrictions and supervision



Agreement to prevent pollution

### Kitakyushu City with recovered environments

1960s



Present



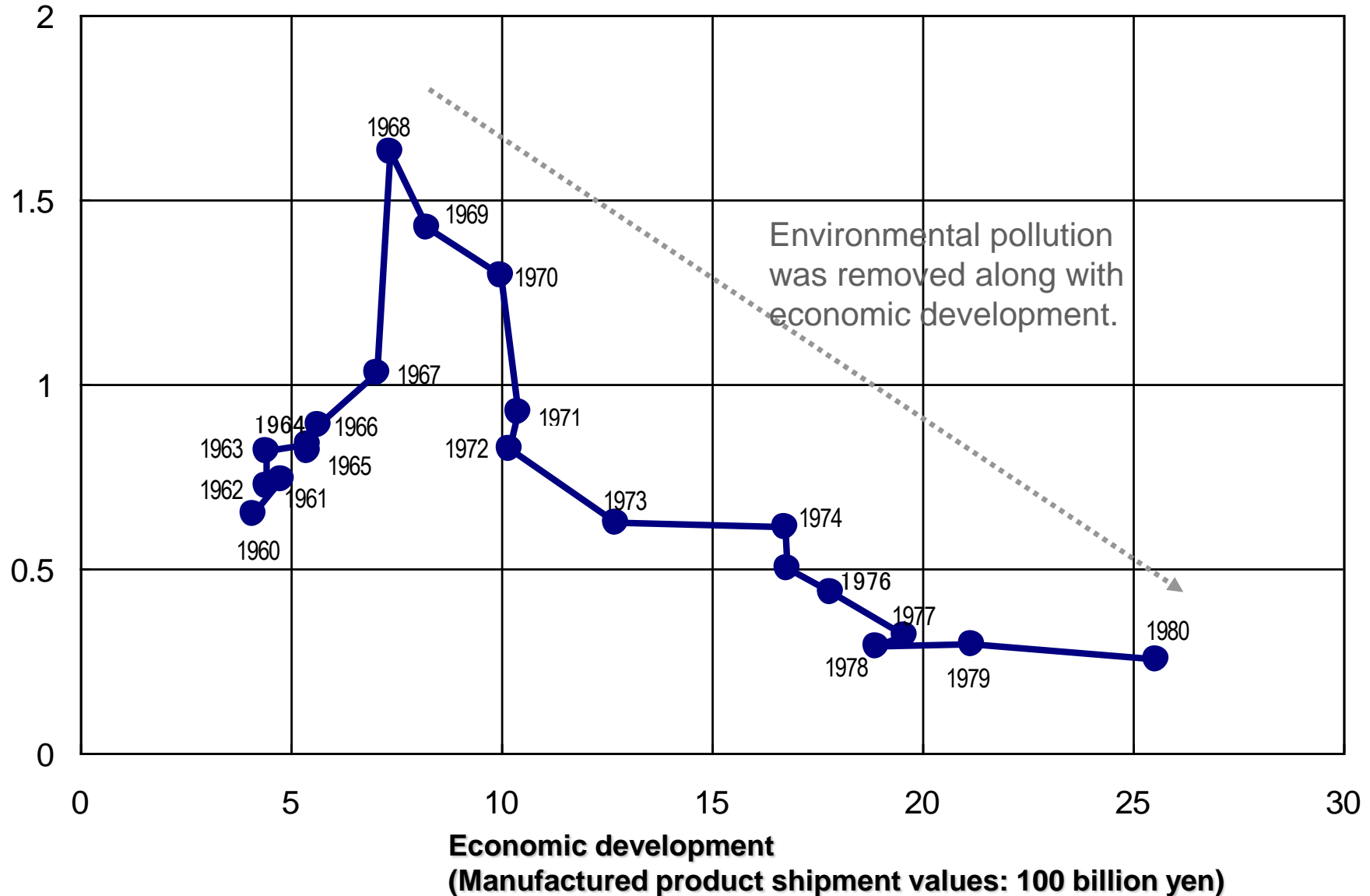
**Solution of pollution problems is a starting point for international cooperation on environmental issues.**

Transferring the experience of overcoming pollution problems so that developing nations need not repeat the same mistake

# Balance of environmental policies and economic policies in Kitakyushu City

Environmental pollution (Sulfur oxides)  
(mg-SO<sub>3</sub>/100 cm<sup>2</sup>/day)

Source: "Survey on the Japanese Experience" by the World Bank



# City of Kitakyushu's Environmental Policy ~Green Frontier~





# Waste Treatment Facility in Kitakyushu



Hibikinada-seibu landfill



Hiagari transfer station



Hiagari plant



Hiagari bulky garbage resources centre



Honjo recycle piazza



Hiagari can and bottle recycling center



Honjo can and bottle recycling center



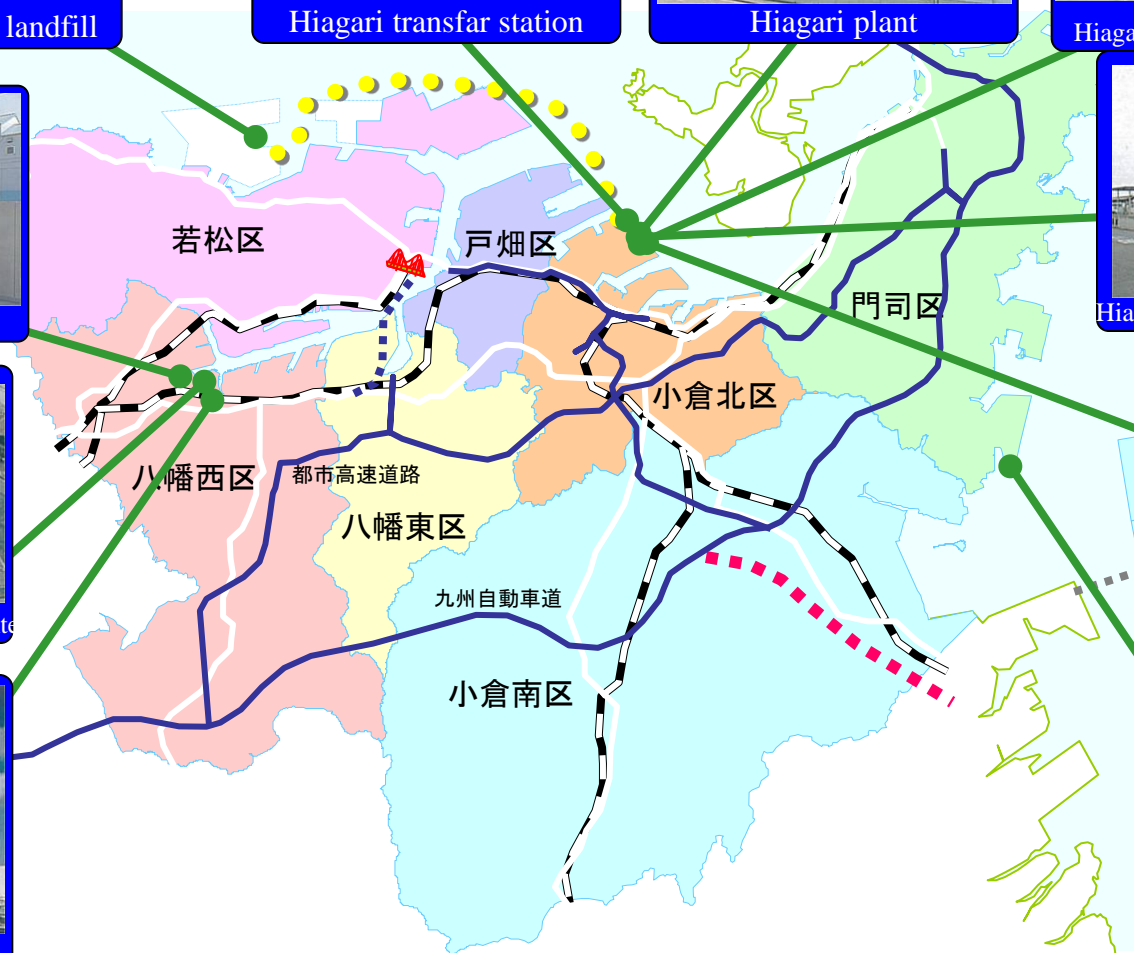
Hiagari recycle piazza



Kogasaki plant



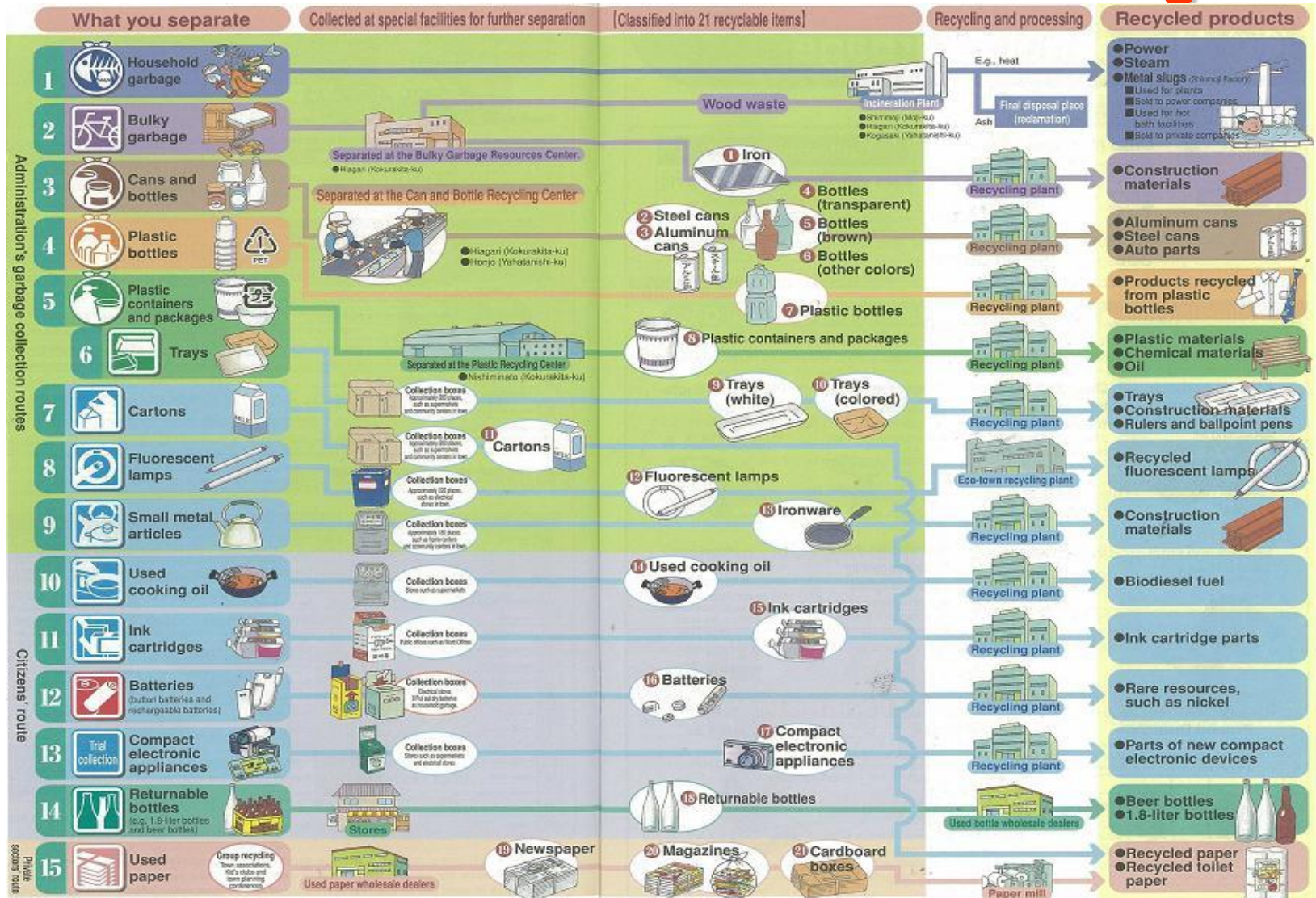
Shinmoji plant





# Making Guide Book for Separate Collection

## Destination of Resources and Garbage





# Making Guide Book for Separate Collection

## Designated bags of household-related waste

- Take recyclable resources and garbage to designated stations by 8:30 AM on collection days in specified methods.
- Specified bags are sold at supermarkets and convenience stores.

### Household Garbage



- Kitchen garbage
- Grass/Pottery
- Clothes/Cloth

● Collection days  
**Twice a week**  
(Mon. and Thu. or Tue. and Fri.)

● Collection place  
**Household Garbage Station**

● Prices

<b>Large</b>	(Ten, 45-liter bags):	<b>500</b> yen
<b>Medium</b>	(Ten, 30-liter bags):	<b>330</b> yen
<b>Small</b>	(Ten, 20-liter bags):	<b>220</b> yen
<b>Extra small</b>	(Ten, 10-liter bags):	<b>110</b> yen

### Cans and bottles



● Collection days  
**Every Wednesday**

● Collection place  
**Recycling Station**

● Prices

Five, **25**-liter bags: **60** yen

### Plastic bottles



● Collection days  
**Every Wednesday**

● Collection place  
**Recycling Station**

● Prices

Five, **25**-liter bags: **60** yen

### Plastic containers and packages



● Collection days  
**Once a week**  
(specified day in your area)

● Collection place  
**Recycling Station**

● Prices

<b>Large</b>	(Five, 45-liter bags):	<b>100</b> yen
<b>Small</b>	(Five, 25-liter bags):	<b>60</b> yen

※ The Recycling Station is where cans, bottles, and plastic bottles are put out.



# Partnership with other Asian nations for mutual prosperity

**Accepted trainees: 7,059 persons from 146 nations; Dispatched specialists: 166 persons to 25 nations**

**Promotion of cooperation networking between Asian cities and environmental improvement projects**



UN ESCAP Ministerial Conference on Environment and Development (2000)

**Kitakyushu Initiative Network**  
(62 cities in 18 nations)



**Contribution to environmental improvements in Dalian, China**  
(Dalian City received the Global 500 Award in 2001.)



**Exchanged memorandum for cooperation on eco-town with Tianjin City**  
(At the Prime Minister's official residence)



Water supply project at Phnom Penh



Air pollution survey in Mongolia



**Driving forward the waste composting project with Surabaya City, Indonesia**  
(Adopted by over 20,000 families)

# Partnership between Surabaya and Kitakyushu



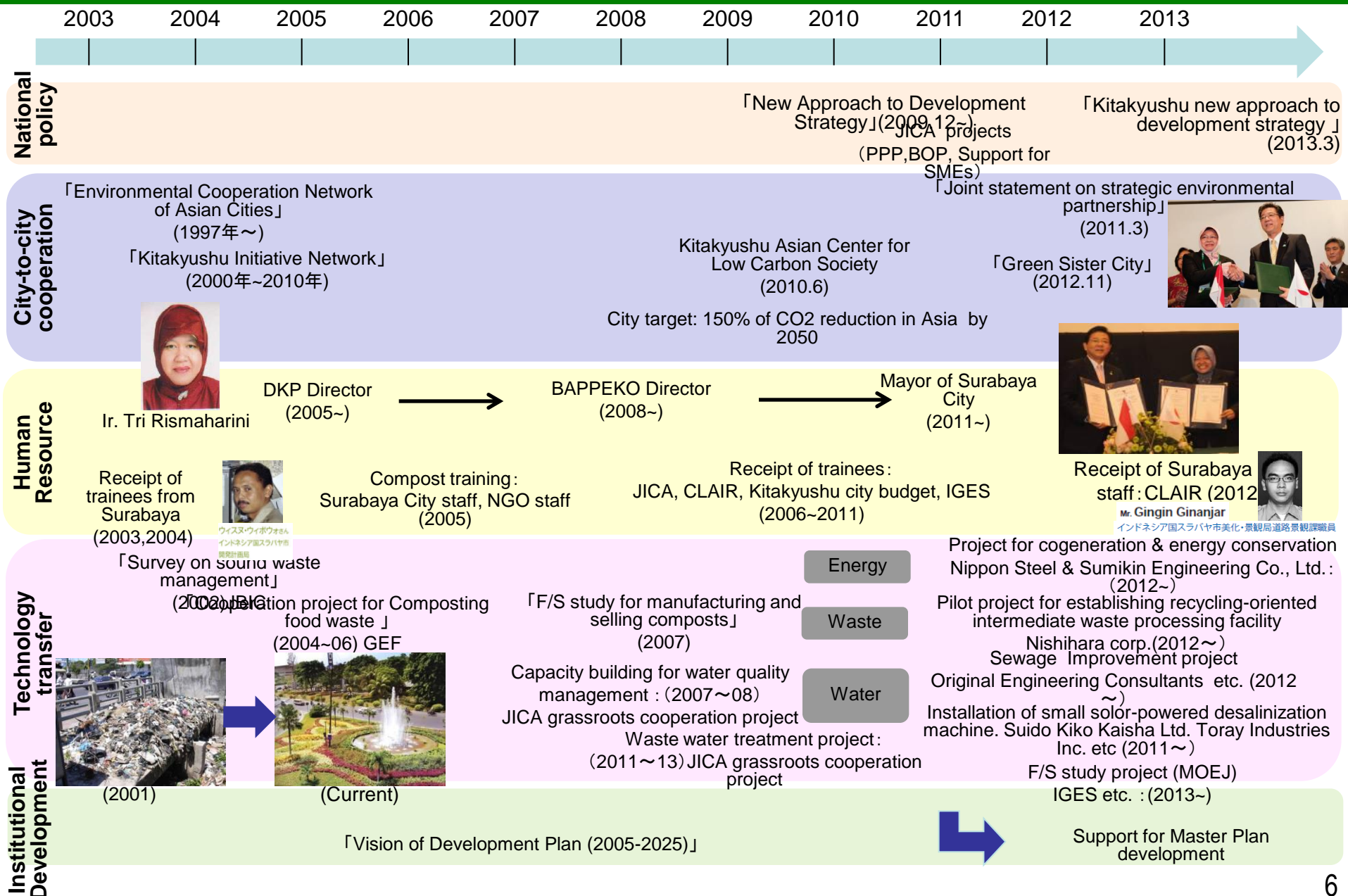
A joint statement was made in March 2011 on a strategic environmental partnership between **Surabaya** and Kitakyushu.



“Green Sister City” agreement was signed in November 2012 between **Surabaya** and Kitakyushu.



# Transition of city-to-city cooperation between Surabaya city and Kitakyushu City



# Development of Waste Management Project in Surabaya ①

**We achieved a reduction of over 30% in household waste.**

We launched the waste management project in **2004** in **Surabaya**, Indonesia's second largest city with a population of three million. The project entailed proactive steps to encourage residents to compost the organic matter that comprises **over half of Surabaya's total waste**. As a result of the project, more than **20,000 households** now have **Takakura composting** baskets and more households are separating their rubbish into different types, leading to a reduction of **over 30% in annual volume of household waste**.



City in 2001  
Streets overrun by garbage



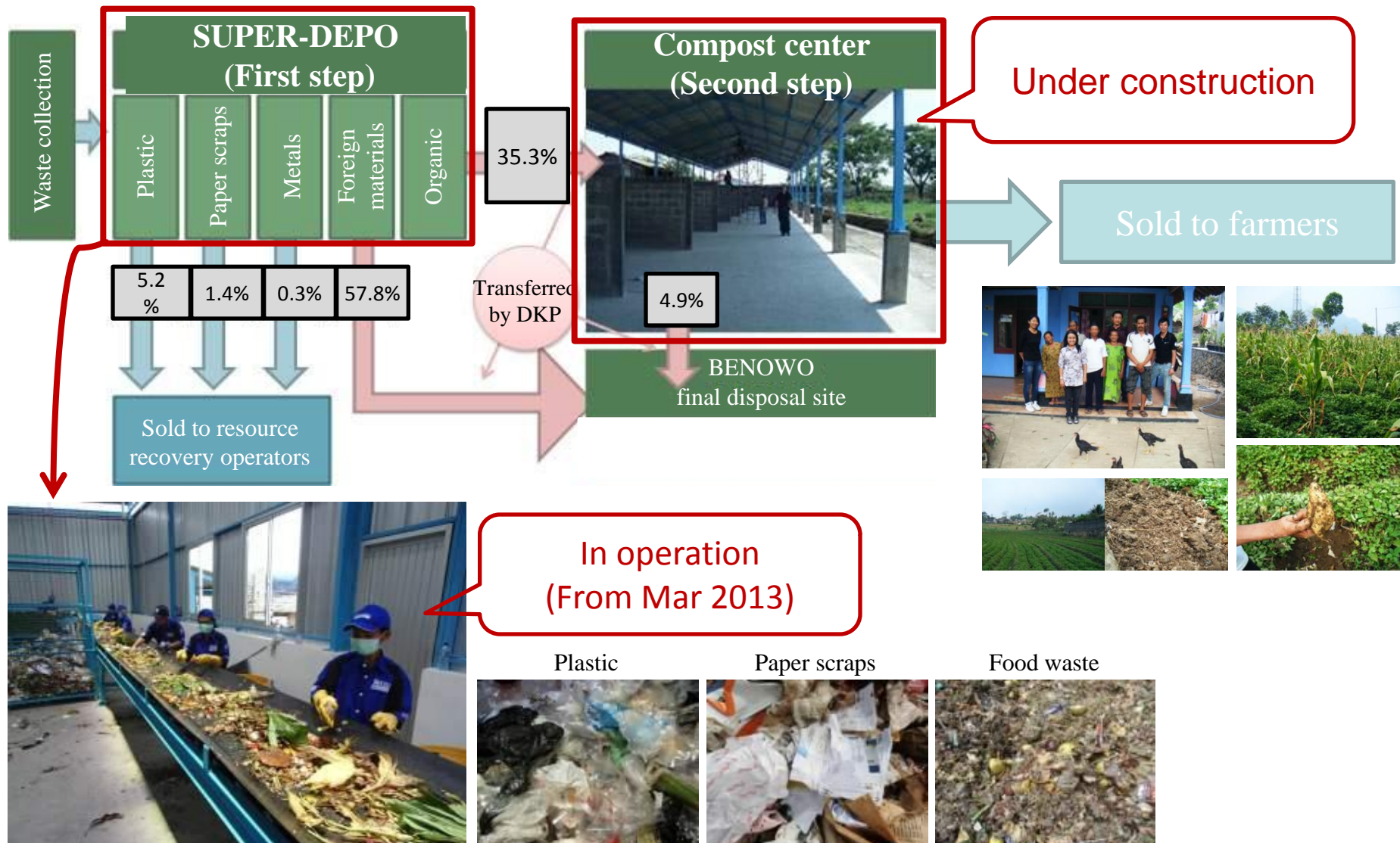
Surabaya's streets today  
Increased greenery in parks and along roads using compost





# Development of Waste Management Project in Surabaya ②

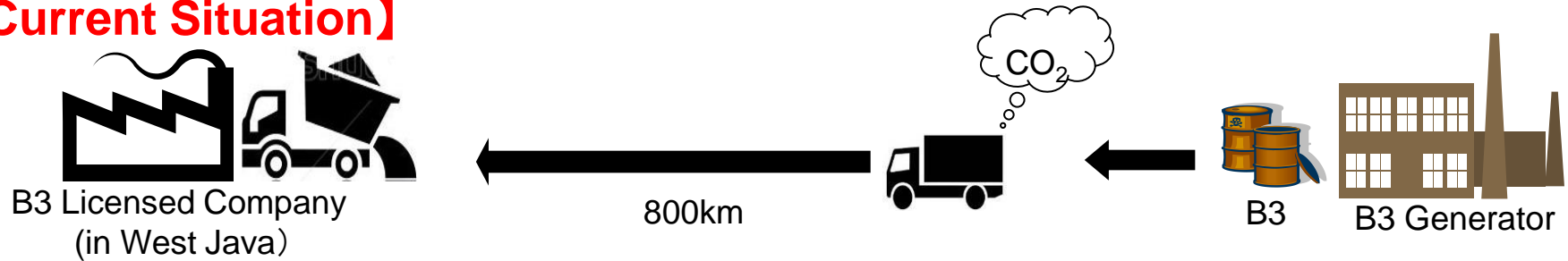
## Nishihara Corporation Implements Pilot Project for Establishing Recycling- Oriented Intermediate Waste Processing Facilities



# Development of Waste Management Project in Surabaya ②

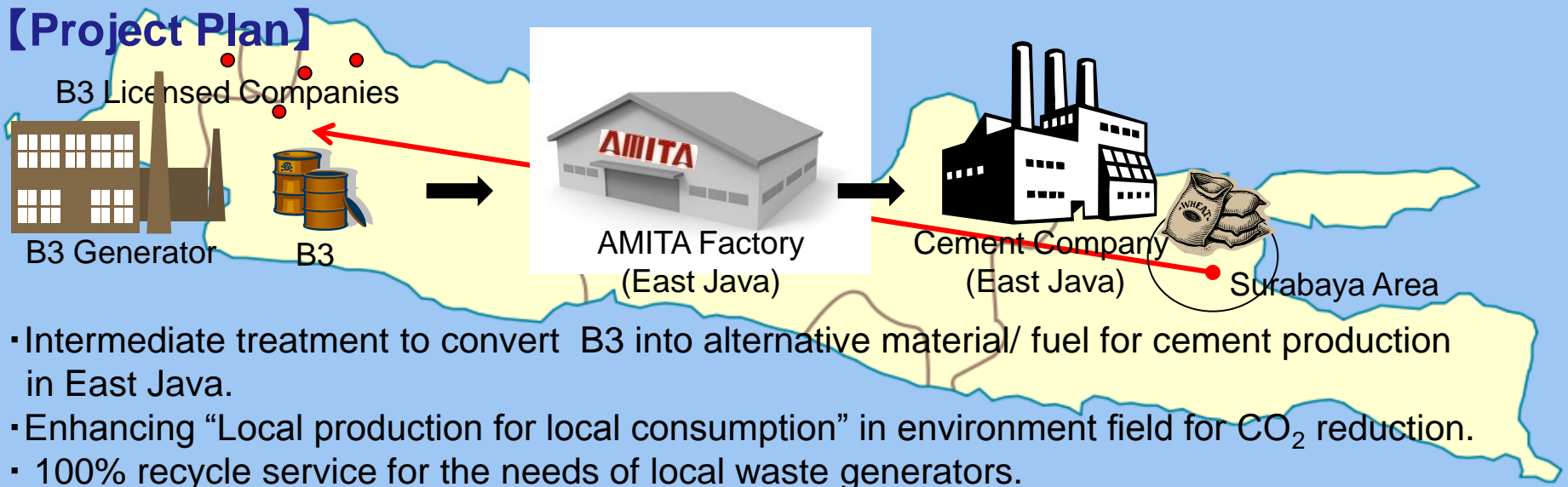
## AMITA Corporation try to establish intermediate treatment factory

### 【Current Situation】



- Most of B3 licensed companies (on treatment) are located in West Java. In East Java, it is hard to find licensed companies other than cement companies.
- B3 wastes are transported long-distance.
- Final disposal would be landfill. (Controlled landfill)

### 【Project Plan】



- Intermediate treatment to convert B3 into alternative material/ fuel for cement production in East Java.
- Enhancing “Local production for local consumption” in environment field for CO<sub>2</sub> reduction.
- 100% recycle service for the needs of local waste generators.



# Development of Waste Management Project in Cebu ①

## BARANGAY LEVEL INITIATIVES

### *Community-based Solid Waste Management Program*

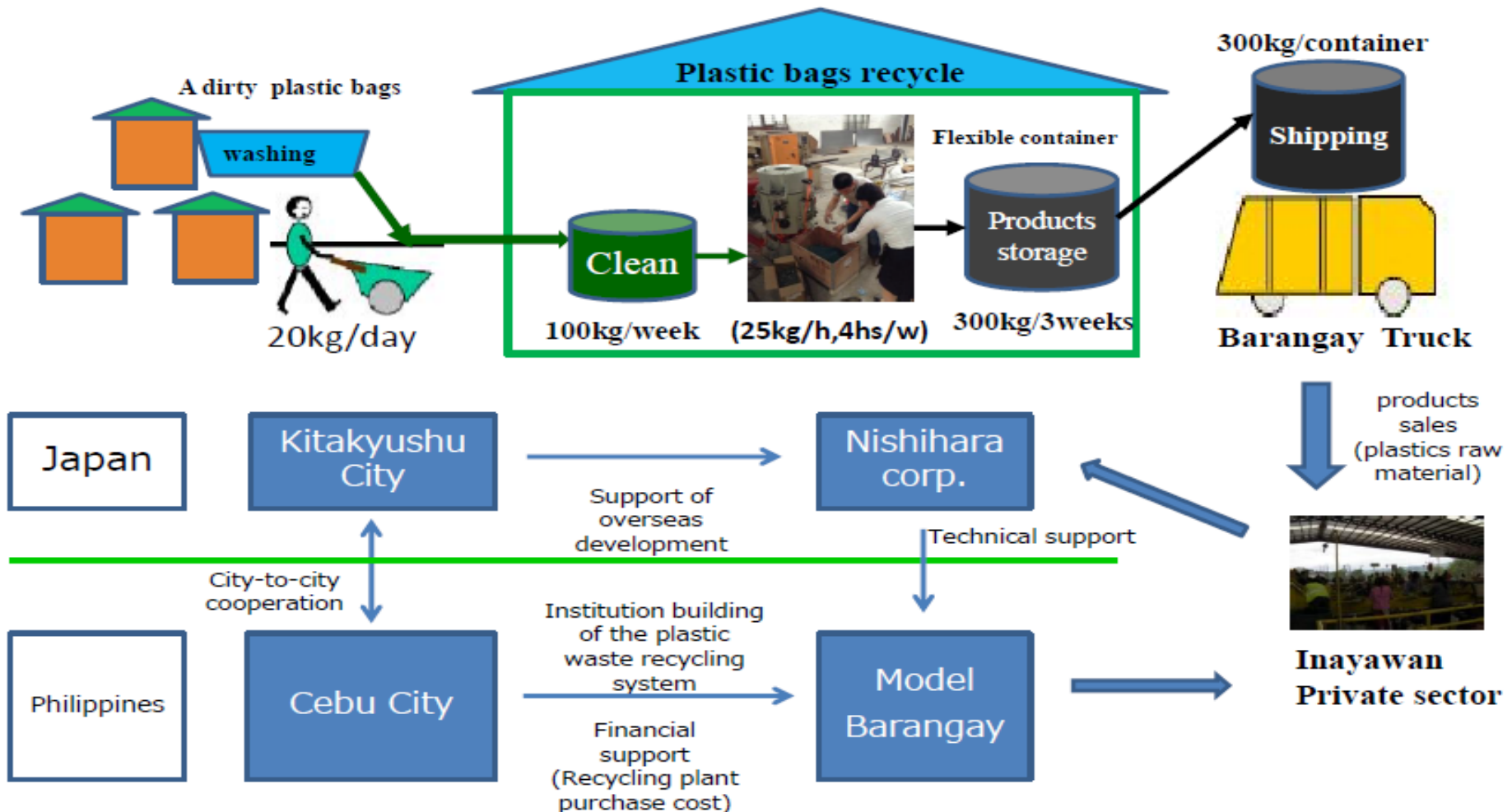
**“Supporting the distribution of Takakura compost baskets to business and the community”**



**TAKAKURA COMPOST PAY FORWARD SCHEME**

# Development of Waste Management Project in Cebu ①

## Nishihara Corporation implements Plastic Waste Recycling Model Project Under the Partnership between Cebu and Kitakyushu in Barangay Talamban





# Development of Waste Management Project in Cebu ②

## Nippon Magnetic Dressing Co., Ltd., Implements E-Waste Research Project cooperated with CCCI and CCTFI under the Partnership between Cebu and Kitakyushu

Recovering used Mobile Phones  
Any Brand or Maker is acceptable



Please note the following points

- Please **Delete Personal Information** in Mobile Phone  
(Example of Personal Information: Address book, E-mail, Call history)
- Please put Mobile Phone in recovery box **without removing the battery**
- Please **Remove IC card and Memory card**
- Please note that **return of recovered mobile phones and accessories is NOT possible**
- If you wish the destruction of the mobile phone, Please bring to the local dealer
- Please put accessories(such as AC battery) in "Used Small Home Appliances Recovery Box"
- Recovered Mobile Phone will be materially

Contact information

City of Kitakyushu, Environment Bureau  
093-582-2630

Mobile Phones Recovery  
Box  
MATERIAL RECYCLE



Thank you for your  
cooperation to Recycle  
Mobile Phones



Image of recovery Box  
( Kitakyushu City, Japan)

# Starting Eco Industrial Town Cooperation in Rayong ,Thailand



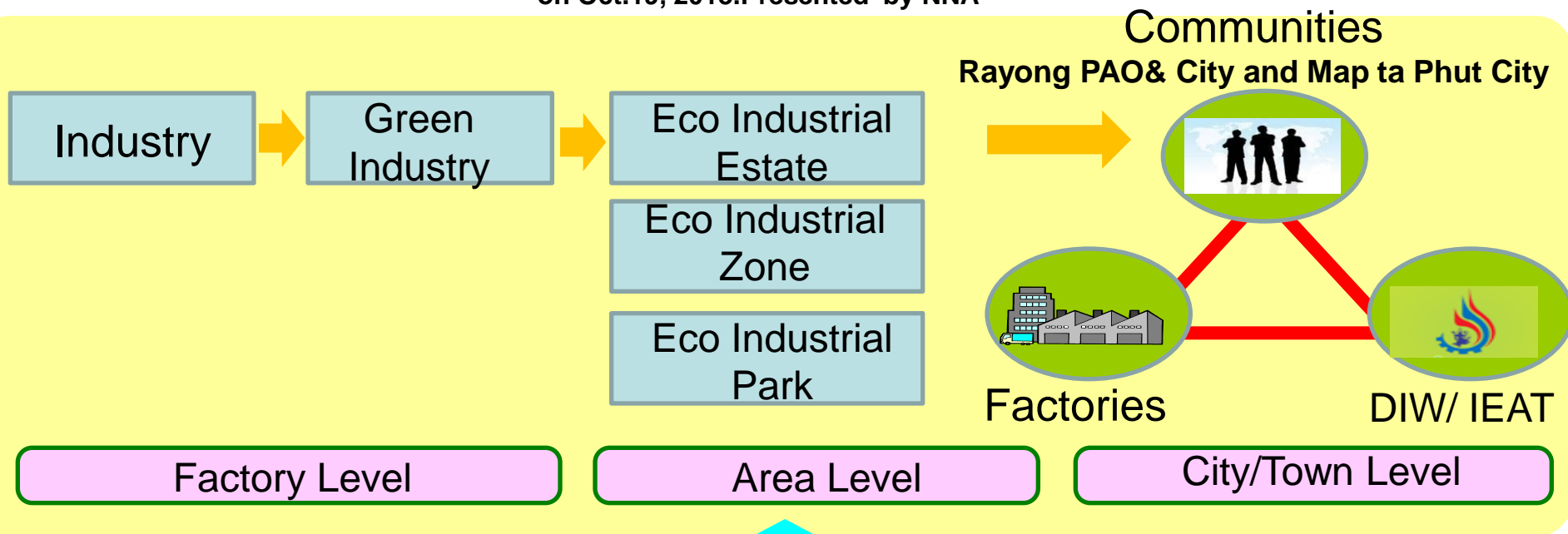
Signing Ceremony of MoU DIW and City of Kitakyushu Aug. 31, 2012



Arkhom Termpittayapaisith, Secretary General of (NESDB) visit to Kitakyushu on Oct.19, 2013. Presented by NNA



Bangkok Post (Oct.25,2013)



“Provision of Comprehensive Urban Solution”

**Kitakyushu Model**



# Building Win-Win Relationships

## Asian cities

Mitigate pollution and improve quality of life while reducing CO<sub>2</sub>



# Kitakyushu

Rejuvenate communities through overseas environmental business development primarily by Kitakyushu companies.



**In addition to international environmental cooperation, when it comes to international environmental business development, our hope is to see the advancement of a uniquely Japanese approach, different from that of other countries, that will respect and bring joy to local residents.**

