



GLOBAL ENVIRONMENT FACILITY  
INVESTING IN OUR PLANET

[www.theGEF.org](http://www.theGEF.org)

# **GEF Support for Sustainable Cities**

**Hiroaki Takiguchi**  
Climate Change and Chemicals Team  
Global Environment Facility  
February 2014

# What is the GEF?

- **Largest public funder for global environment**
  - ✓ Biodiversity, Climate Change, International Waters, Land Degradation, Chemicals...
  - ✓ Grants covering incremental or additional costs associated with global environmental benefits
  - ✓ Financing mechanism of environmental conventions
- **Independent financial organization since 1991**
  - ✓ Membership of 183 countries
  - ✓ \$11.5 billion allocated, leveraging \$57 billion in co-financing
  - ✓ Track record of over 3,200 projects in 165 countries
  - ✓ 10 Implementing Agencies (5 development banks and 5 UN agencies)



**GLOBAL ENVIRONMENT FACILITY**  
INVESTING IN OUR PLANET

# GEF and Climate Change Finance

- Invested over \$4 billion in climate change in 157 countries
  - ✓ Over 600 mitigation projects and programs
  - ✓ Leveraged more than \$27 billion co-financing
  - ✓ 2.6 billion tonnes of CO<sub>2</sub> avoided, catalyzing 6.8 billion tonnes through market transformation
  - ✓ Grant financing for climate mitigation in GEF-5 (2010-2014): \$1.26 billion
  - ✓ Adaptation financing from Least Developed Countries Fund and Special Climate Change Fund (LDCF and SCCF)
- Catalytic, innovative, and cost-effective
  - ✓ Leader in financing new, emerging low-carbon technologies
  - ✓ Pioneered market-based approaches, innovative instruments

GEF is an operating entity of the Financial Mechanism of United Nations Framework Convention on Climate Change (UNFCCC)

# Transport and Urban Systems

- GEF support for sustainable urban transport started in 1999
- Urbanization and transport system expansion will likely comprise largest future growth of GHG emissions in developing countries
- [Target for GEF-5 \(2010-2014\)](#)
  - ✓ \$250 million GEF financing for climate mitigation
  - ✓ 20-30 cities adopting low-carbon programs
  - ✓ \$1.2 billion investments mobilized



GLOBAL ENVIRONMENT FACILITY  
INVESTING IN OUR PLANET

# Examples of GEF Support for Cities

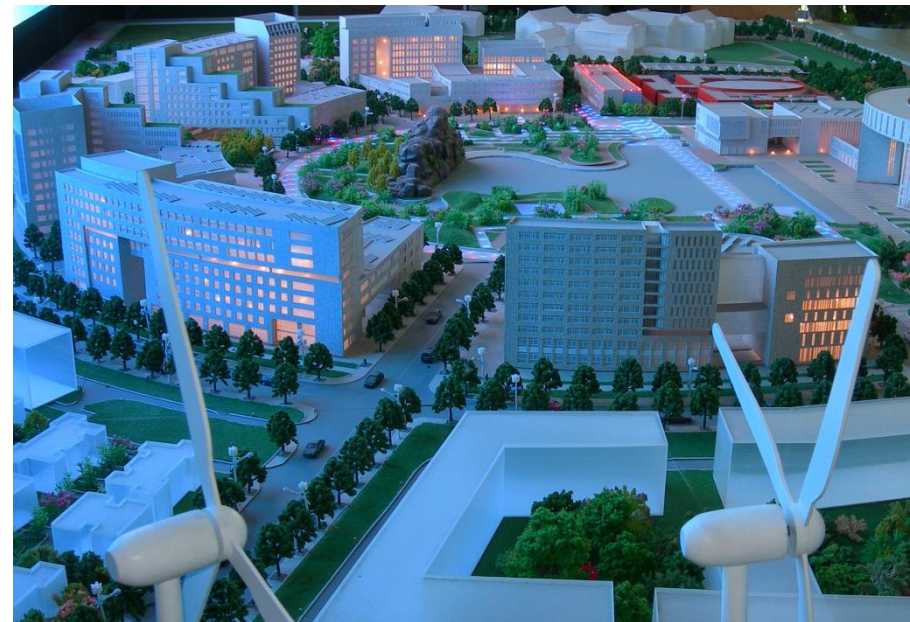
- Bus rapid transit
- Low/zero emission zones
- Bike and pedestrian infrastructure
- Rail and inland waterway transport infrastructure
- Low carbon urban planning support
- Adaptation measures
  - from Least Developed Country Fund & Special Climate Change Fund (LDCF & SCCF)



GLOBAL ENVIRONMENT FACILITY  
INVESTING IN OUR PLANET

# Mitigation Example 1: Sino-Singapore Tianjin Eco-City Project

- **Objective:** Support the local government to develop Sino-Singapore Tianjin Eco-City as an energy/resource efficient and low GHG emission city
- **Agency:** World Bank
- **Financing:** GEF \$6.1 million; Co-financing: \$57.9 million
- **Activities:**
  - ✓ Implementation framework of eco-city
  - ✓ Integrated public transport system
  - ✓ Green building pilot investment and technical assistance



# Mitigation Example 2: ASTUD Program

- **A**si**S**ustainable **T**ransport and **U**rban **D**evelopment  
→ First programmatic approach in the area of transportation
- **Agency:** Asian Development Bank
- **Objective:** Support Asian cities in realizing GHG reduction and local co-benefits through the integration of low-carbon transit infrastructure
- **Financing:** GEF \$13.6 million; Co-financing \$988 million
- **Child Projects:**
  - **Bangladesh:** Greater Dhaka Sustainable Transport Corridor Project
  - **China:** Jiangxi Fuzhou Urban Integrated Infrastructure Improvement, etc.
  - **Mongolia:** Urban Transport Development Project



# Adaptation Example: Integration of Climate Change Risks into the Maldives Safer Island Development Program

**Objective:** Reduced impact of sea level rise on critical infrastructure and sustainable development

**Agency:** UNDP

**Financing:** \$4.49 million from LDCF

**Activities:**

- ✓ Climate resilient land use plan development
- ✓ Updating drainage systems
- ✓ Restoration of natural ridge systems providing coastal protection
- ✓ Training of specialists dealing with land use planning, coastal zone management, coastal infrastructure development and land reclamation and mainstreaming into plans



GLOBAL ENVIRONMENT FACILITY  
INVESTING IN OUR PLANET



# Proposed GEF-6 CCM Strategy

## 1. Promote innovation & technology transfer

- Program 1: Promote timely development, demonstration and financing of low carbon technologies and mitigation options
- Program 2: Develop and demonstrate innovative policy packages and market initiatives

## 2. Demonstrate systemic impacts of mitigation options

- Program 3: Promote integrated low-emission systems
- Program 4: Promote conservation and enhancement of carbon stocks in forest and other land use, and support climate smart agriculture

## 3. Foster enabling conditions to mainstream mitigation concerns

- Program 5: Integrate findings of Convention obligations and enabling activities into national planning processes and mitigation targets

**Goal:**  
To support developing countries and economies in transition in achieving transformational change towards development with low carbon emissions

# Proposed GEF-6 Integrated Approaches

## Pilot approach to global environmental commons in support of sustainable development

### 3 Themes

- i. Taking Deforestation out of the Commodities Supply Chain
- ii. Sustainability and Resilience for Food Security in Sub-Saharan Africa

### iii. **Sustainable Cities**

Recognizing need to address urbanization as key driver of global environmental degradation and opportunity

1. Integrated policy and governance support
2. Demonstrations of sustainable cities initiatives
3. Financial mechanisms
4. Partnerships for dissemination and scale-up



GLOBAL ENVIRONMENT FACILITY  
INVESTING IN OUR PLANET