

### Location & Geographic Features

- 810 kilometers south of Metro Manila
  - 1 hr & 20 min by plane
  - 24 hours by boat
- Boundaries**
  - North: Macajalar Bay
  - North: Hills and Mountains

### Demographics

- Area : 56,367 hectares
- Population : 585,000
- Growth Rate : 2.54%
- Literacy Rate: 98.74%
- Employment Rate: 92.39%
- Crime Rate: 0.11%

### Vision

- By year 2015:**
  - A peaceful, orderly, livable city with a modern trading and services center where there are equal opportunities for its disciplined citizens to develop and prosper in a clean and healthy environment.

### Environmental Concerns

- Air Pollution
- Traffic Congestion
- Flooding
- Solid Waste Management
- Liquid Waste Management

#### Ambient Air Quality (2005-2006)

	SO2	NO2	Benzene	Toluene	p-Xylene	PM10
2005	4.79	16.19	0.86	3.21	0.48	44.48
2006	4.98	17.56	1.00	3.20	0.57	38.43
2007	3.60	9.10	0.03	2.81	0.34	1.23
2008	4.44	12-06	0.65	2.87	0.16	-
2009	3.56	9-28	0.74	0.76	0.20	-
Standards	80	150	-	-	-	-

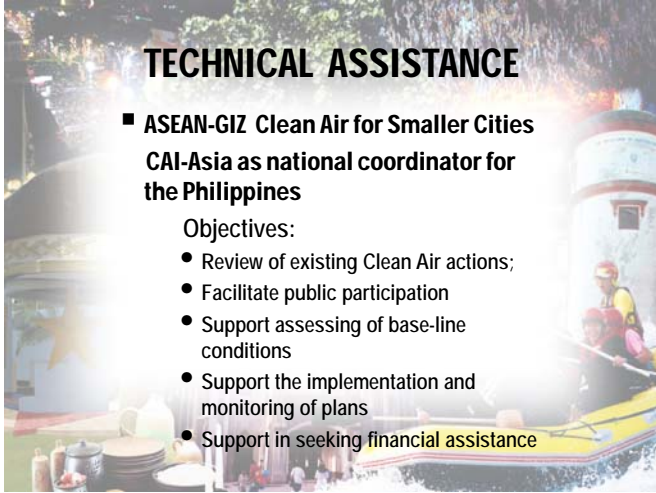


## TECHNICAL ASSISTANCE

### ■ ASEAN-GIZ Clean Air for Smaller Cities CAI-Asia as national coordinator for the Philippines

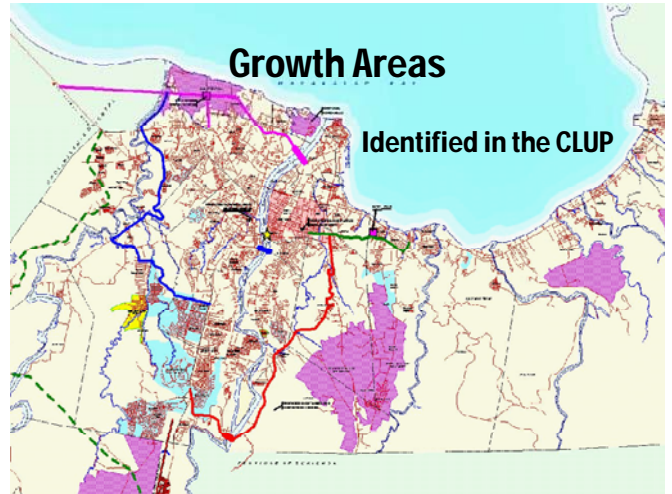
#### Objectives:

- Review of existing Clean Air actions;
- Facilitate public participation
- Support assessing of base-line conditions
- Support the implementation and monitoring of plans
- Support in seeking financial assistance



## Growth Areas

Identified in the CLUP



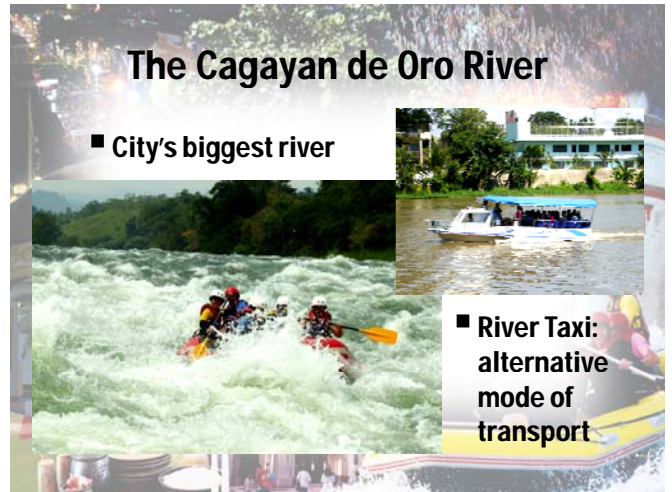
## ON-GOING PROJECTS

- Transfer of the City's dumpsite to a landfill
- Privatization of Garbage Collection
- Anti-Smoke Belching Campaign
- Periodic inspection and monitoring of industrial plants, factories and commercial centers



## The Cagayan de Oro River

- City's biggest river



- River Taxi:  
alternative  
mode of  
transport

## The Golden Mile



## The Divisoria Park



**Plan for Divisoria  
Park**

