



## COMMUNITY BASED MODEL FOR WASTE MANAGEMENT Model City for Indonesia

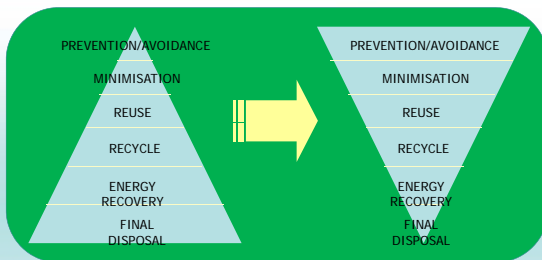
\*When you are willing to make sacrifices for a  
great cause, you will never be alone.\*

### Improper waste management



ACT NO.18 YEAR 2008

POLICY AND STRATEGY  
TRANSFORMATION



### BANK FOR GARBAGE



What should be done at home...?

Other solution which is established....."BANK FOR GARBAGE"

**BANK FOR GARBAGE** is :

One of the 3 R implementation strategies for waste management in community level.

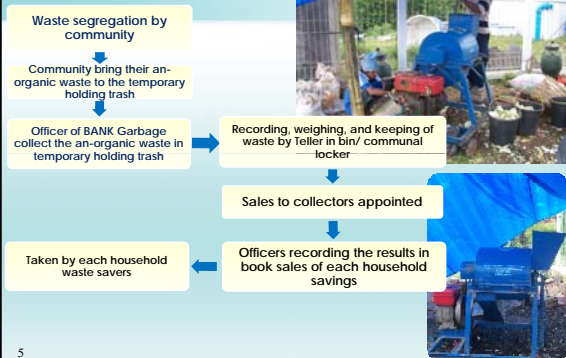
**OBJECTIVE** is :

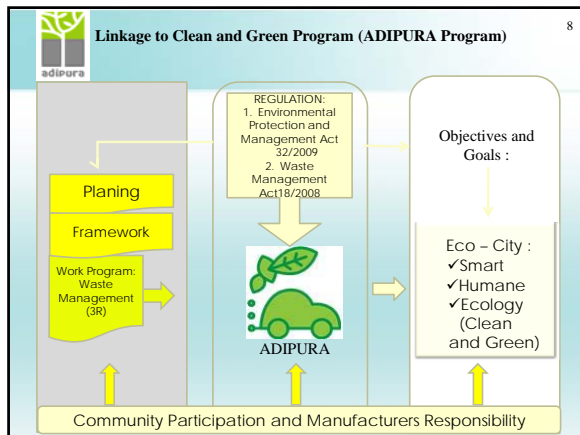
To implement proper waste management in community level by teach the community to segregate their garbage and deposit the an-organic waste into the bank for garbage.

### Benefits

- Can be a guideline for producer/other parties in implementing the Waste Management Act 18/2008.
- Alternative to solving problems and managing household waste,
- A media education for children (the importance of sorting and saving garbage).
- Increasing citizen awareness about the importance of managing household waste.
- Create a healthy and clean environment.

### Bank of Garbage Scheme





TERIMA KASIH  
Thank You

9