

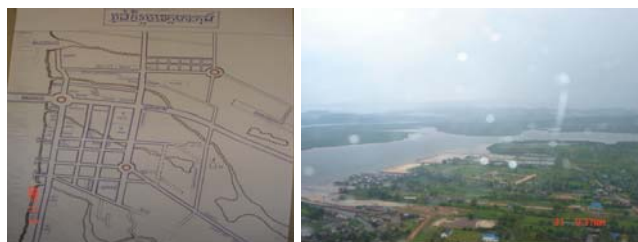
Contribute to Climate Change: Waste management and Urban forest Improvement in Koh Kong town, Cambodia

Contents

- Background
- Challenges: SWM and Urban Forest
- SWM :Reduction and Proper disposal Program
- Urban Forest Improvement



Koh kong town map



- Size: 9,170 ha
- Population: 26,015 (5.088 families)
- Majority lives along the river bank
- No access by road before 2004
- To Koh Kong town just connected by new national Road.

Challenges

- Waste composition: Mixed waste have been collected and disposed in open dumpsite (Approx. 20t/day).
- Waste amount: increase accordingly due to population growth and economic activities.
- Public Awareness on waste disposal still limited : littering and illegal dumping.

Challenges

- Lack of waste collector service
- Small Dumping site and no access road to this site
- The people living along the river bank
- The people Lack of awareness on waste management
- Lack of participation from local authorities and other stakeholders.



Actions we have been done

- Organized Environment day every year
- Put the Sign-board along the road and public areas
- Meeting and awareness campaign to local people
- Put the garbage bins in public locations.



Actions we have been done

- Mangroves and forests replanting
- Established community for mangrove preservation.



Vision by 2020

Koh Kong town becomes a better place to live as the town is green and clean town



Targets

- Decrease waste generation by 30% by 2015
- By 2015, 90% of local authorities and relevant institution understand their roles and responsibilities of waste management
- By 2015, 50% of the local residents, shops, guest houses and hotels owners adopt good practice of handling waste, for example waste separation and put in an appropriate bin.
- Strengthening of law enforcement and public awareness
- By 2015 , strengthen existing mangrove communities and extend tree planting in urban area.

Specific action/ measures

- Disseminate the country's existing legal frameworks regarding waste management
- Provide trainings to local authorities, relevant institutions and key local inhabitants on the effects of miss handling waste
- Develop a master plan for the town with an emphasis on waste management i.e. dumping site and treatment plan
- Initiate and implement pilot project on community based solid waste management and mangrove conservation
- Introduce good practice of handling waste in schools.

Conclusion

- Financial and technical assistance regarding the development of a master plan with specific focus on waste management is needed.
- Financial assistance to extend mangrove and forest plantation areas.
- Good participation from relevant stakeholders.

Thank you very much

