



Cities and Low Carbon/Low Polluting Society



A H M E D A B A D I N I A T I V E S

A h m e d a b a d T o d a y

Area	464.16 sq Km
Population (2001)	4.7 m
Population (2010)	6 m
Languages	Gujarati, Hindi and English
Best Time to Visit	Winters
STD Code	079
Rain Falling (2008)	667 M.M
Total Vehicles	2 m
Avg. Trip Length	5.5 km
Ahmedabad Municipal Transport System	1000 buses
Public Transit Passengers	900,000



- Mixed Land use.
- Well Balanced Network.
- Compact City- Ahmedabad has 5 ring roads and 17 well developed radials.

CARBON EMISSIONS AND POLLUTION - 2005

2005 : 3rd most polluted city in the country

- Declining Public Transport Ridership.
- Excessive dependency on Ground water leading to Declining Ground Water table.
- Inefficient water supply and Street Lighting System.
- Inadequate/Inefficient Waste Collection & Management- Solid and Liquid Waste.
- Open burning biomass and solid waste.



CARBON EMISSIONS AND POLLUTION

2009 : "Urban Environment Accords" Award.

- ICLEI Survey for 16 India Cities.
- Ahmedabad ranked the Best Performing Municipal Corporation in implementing the outlined Objectives.
- Average per capita Emission
 - National- 1.75 Tonne/Annum.
 - Ahmedabad- 1.49 Tonne/Annum.
- A Cleaner and Greener Ahmedabad for its Residents.

AWARDS AND RECOGNITIONS

2009 : Best Mass Transit Award

- MoUD, Govt of India



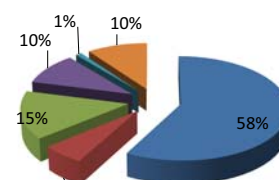
2010: Sustainable Transit Award

- (ITDP, ED, US-TRB, CAI, GTZ, EMBARQ, ICLEI, UN-CRE)

CITY CARBON PROFILE

ICLEI Survey Results.

- Annual Emissions from Activities= 6780752 TeCO₂
- Per Capita Emission= 1.49 T/Year. (for 2007-08)
- Share of Corporation Level Emission in Total = 2.91%



Share of Urban Transportation in Ahmedabad's Carbon Emissions @10%



City Carbon Emissions- 2007-08

Corporation Carbon Emissions- 2007-08

CLIMATE STRATEGY



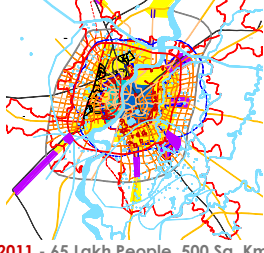
STATUS OF ACTIVITIES



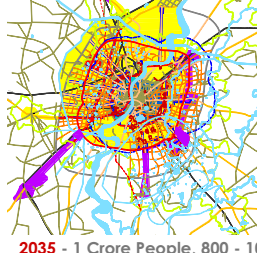
STATUS OF ACTIVITIES

4. URBAN PLANNING & DESIGN

- AUDA Master Plan- Promotion of Mixed Use
- Compact City Approach- Poly Centric Dev. Plan.
- Green Building Incentives and Promotion.
- Green Spaces-
 - Kankaria Lake Front Development.
 - Sabarmati River Front Development.



2011 - 65 Lakh People, 500 Sq. Km



2035 - 1 Crore People, 800 - 1000 Sq. Km

STATUS OF ACTIVITIES

6. ENVIRONMENTAL HEALTH

- Air Action Plan
- Massive Forestation Drive.
- Corporate sponsored Green Public Parks and Green Traffic Islands.
- Advanced Traffic Management Systems



Ahmedabad Plan

Vision

- Long term Sustainability
- 'Department of Climate Change'

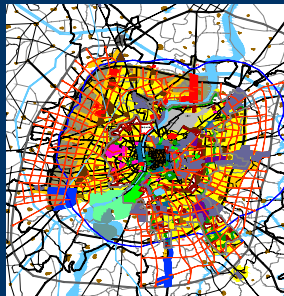
Integrated, Comprehensive

Multimodal

- Metro System, Regional Rail, BRTS, Bus System, Feeder, Bicycles, Pedestrians

Land use Plans

- Network Completion, Missing links, bridges, rail over bridges



ACCESSIBLE AHMEDABAD - JANMARG

Land Use Plan - City Structure

-Trip Lengths

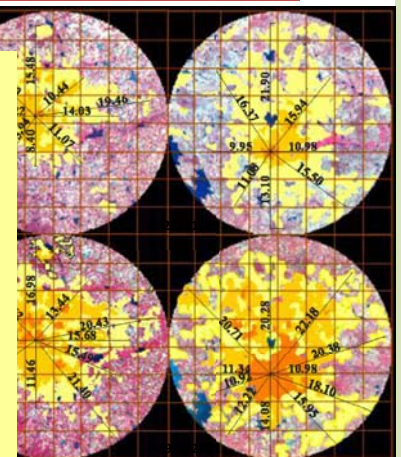
- Ahmedabad - 5.8 Km
- Bangalore - 11.5 km
- Hyderabad - 8 Km

Road Fatalities - 2009

- Ahmedabad - 202
- Hyderabad 481
- Bangalore-737

-COMPACT-MIXED LANDUSE

-COMPLETE NETWORK



Bangalore(5.6 Mill)

Hyderabad(5.5 Mill)

Mill)

Source: Desai Sowmya, Urban Spatial Structures & Land management Mechanisms

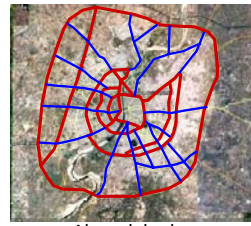


Presence of MIXED LAND USE

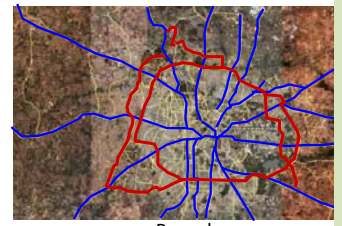
Streets on which Commercial activities are allowed
Jobs scattered
Trips distributed

A
H
M
E
D
A
B
A
D

Complete Road Network Structure



Ahmedabad



Bangalore



Hyderabad

Road Structure of the Urban Agglomeration

— radials
— rings

A
H
M
E
D
A
B
A
D

Interventions in Public Transport

- Bus fleet size increased from 560 to 1010
- 650 privately operated CNG and Euro III buses
- Battery operated buses ply on commercial streets between parking lots and malls
- 200 buses between Ahmedabad and Gandhinagar were converted to CNG
- All school buses converted to CNG



Today Ahmedabad has 1100 CNG buses on road

ACCESSIBLE AHMEDABAD – JANMARG

Interventions in Para-Transport

- All auto rickshaws registered before 1991 were scrapped
- Owners of these auto rickshaws were convinced to buy modern CNG auto rickshaws
- State, district and local administration helped in loan procurement
- Auto rickshaws registered after 1991 were converted to CNG
- CNG kit was provided at reasonable cost
- 45 CNG stations were set up in Ahmedabad in PPP mode

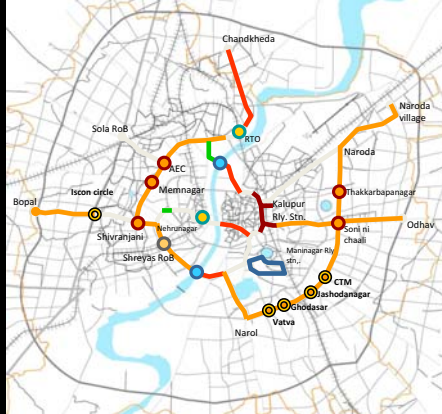


Today Ahmedabad has 60,000 CNG auto rickshaws

ACCESSIBLE AHMEDABAD – JANMARG

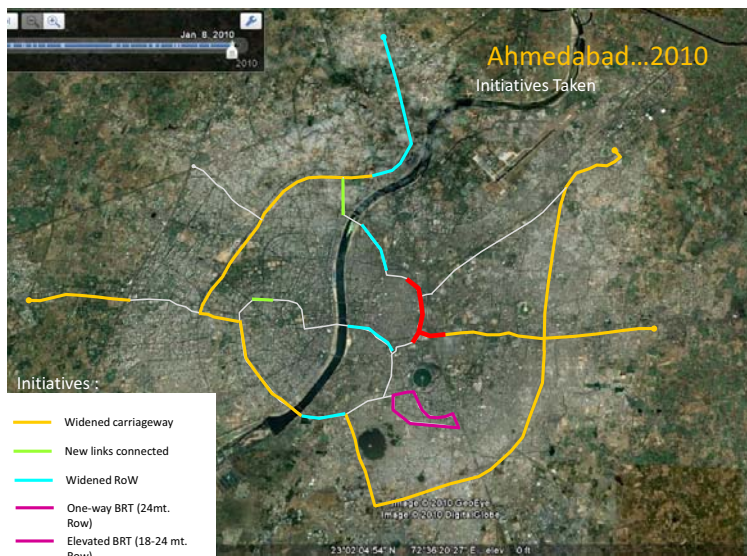
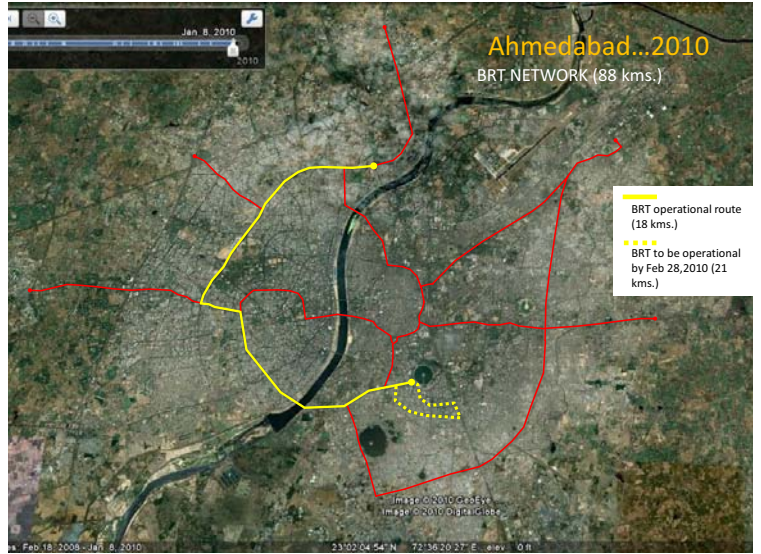
BRTS COMPREHENSIVE PLANNING

To upgrade the overall mobility of the city



- Widened CW
- Widened RoW
- New Roads
- Elevated corridor
- One-way loop (adopted due to less RoW)
- New River bridge
- RoB Constructed (Phase 1)
- Proposed RoB/ RuB (Phase 2)
- Flyovers (phase 1)
- Proposed Flyovers (phase 2)

A
H
M
E
D
A
B
A
D



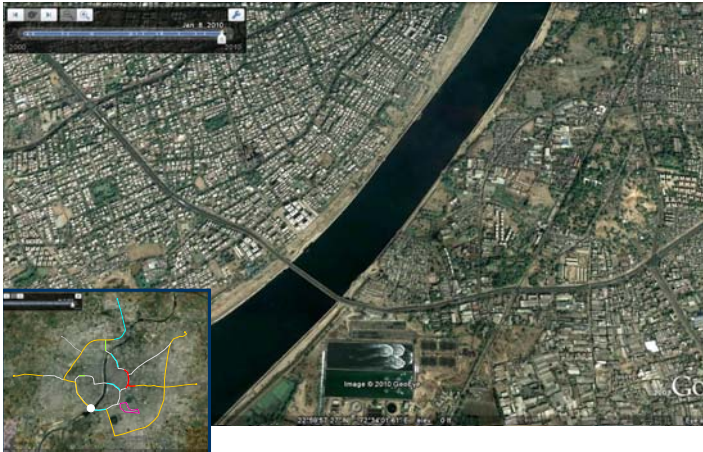
- Initiatives:-
- Widened carriageway
 - New links connected
 - Widened RoW
 - One-way BRT (24mt. Row)
 - Elevated BRT (18-24 mt. Row)

DHANPITH - ASTODIA : RoW widened



A
H
M
E
D
A
B
A
D

New river bridge connecting to Maninagar and eastern parts
CHANDRANAGAR - PIRANA:



A
H
M
E
D
A
B
A
D



AFTER.. At Anjali



JANMARG - Ahmedabad

A
H
M
E
D
A
B
A
D

