



NATURAL – CULTURAL LINKAGES IN THE CU LAO CHAM – HOI AN WORLD BIOSPHERE RESERVE.



Mr. Thao Ngoc Le
Hoi An Heritage city, Vietnam

1. The Cu Lao Cham – Hoi An Biosphere Reserve (CBR)



- Area: 33.737 ha.
- Population: 94.000 peoples

BR CORE ZONE - MPA

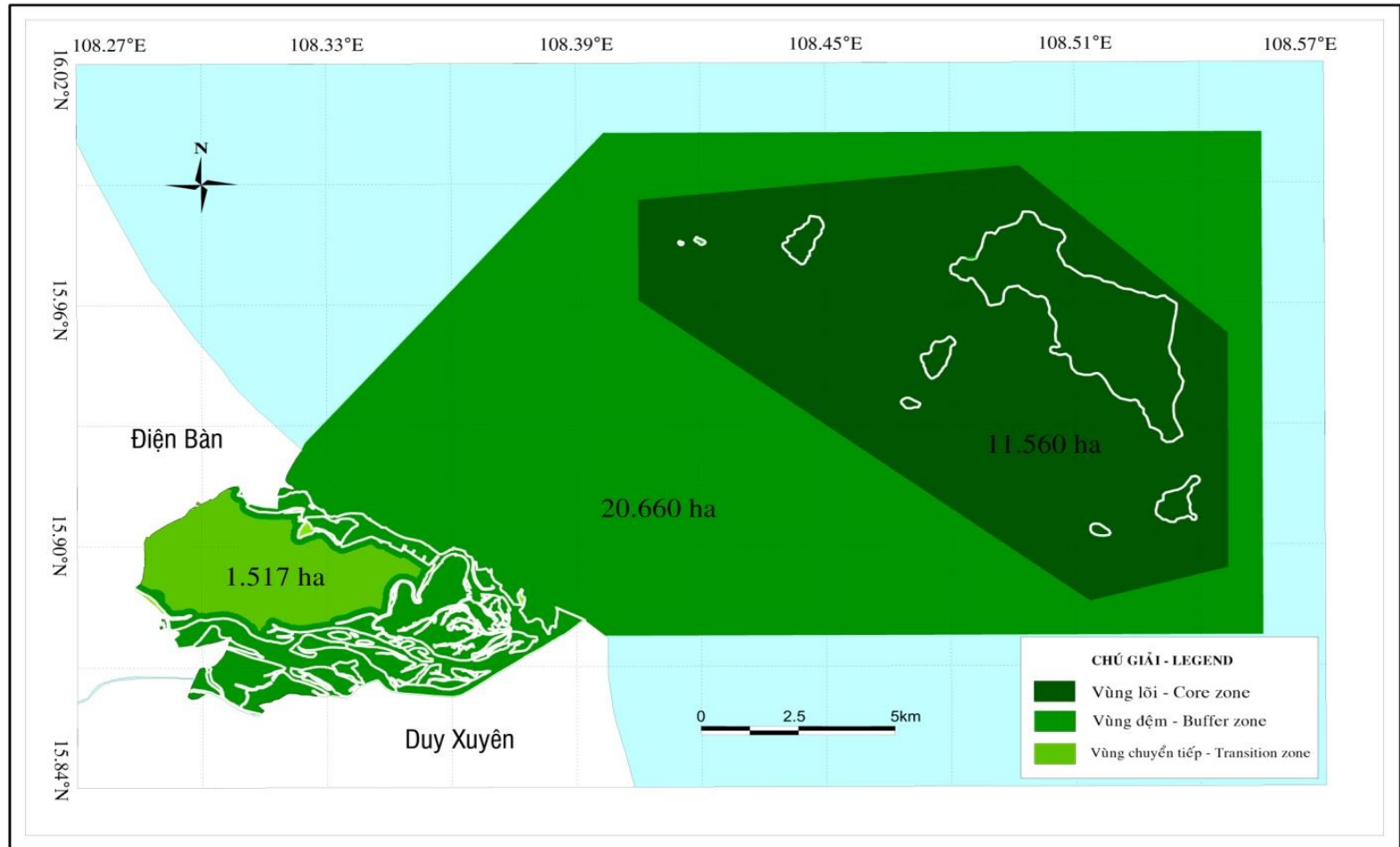
BR BUFFER ZONE - Mangrove

BR TRANSITION ZONE – Hoi An
ancient town



2. The CBR zoning map

BẢN ĐỒ CÁC PHÂN VÙNG CHỨC NĂNG KHU DỰ TRỮ SINH QUYỂN THẾ GIỚI CÙ LAO CHÀM - HỘI AN



Map of the functional zones

- * CBR has been created the integration between human-ecology and natural-ecology.
- * The CBR's coordination is focusing on harmonization between man and biosphere.

3. NATURAL, CULTURAL RESOURCES

Charming overland and underwater landscapes



- * Natural and cultural resources are not exist by an independent way but have an influence and interaction (The Hoi An ancient town – the world heritage was recognized in 1999)
- * The real value of the world heritage is not only old houses but also cultural life of local communities.



4. Outstanding global values of CBR



- * More than 357 hectares of coral-reef, 80 hectares of sea-grass, seaweed, 10 beaches and 1.500 hectares of primary forest are protecting by MPA and local peoples
- * The natural and cultural resources are targets to tourism attraction and life saving of more than 3.000 peoples in the islands.

4. Outstanding global values of CBR



- * This is special place to inherit the preference of nature.
- * The most important thing is respecting and harmonization of people to nature.

5. Vulnerability to disasters and specify the threats



- * There are many impacts from hydropower dams in upstream of the Thu Bon river basin to ecosystems of the CBR in downstream
- * That are changing the natural morphology, moving the direction of river, impacting to ecosystems health, loss the nursery and habitat area and separating species life cycle

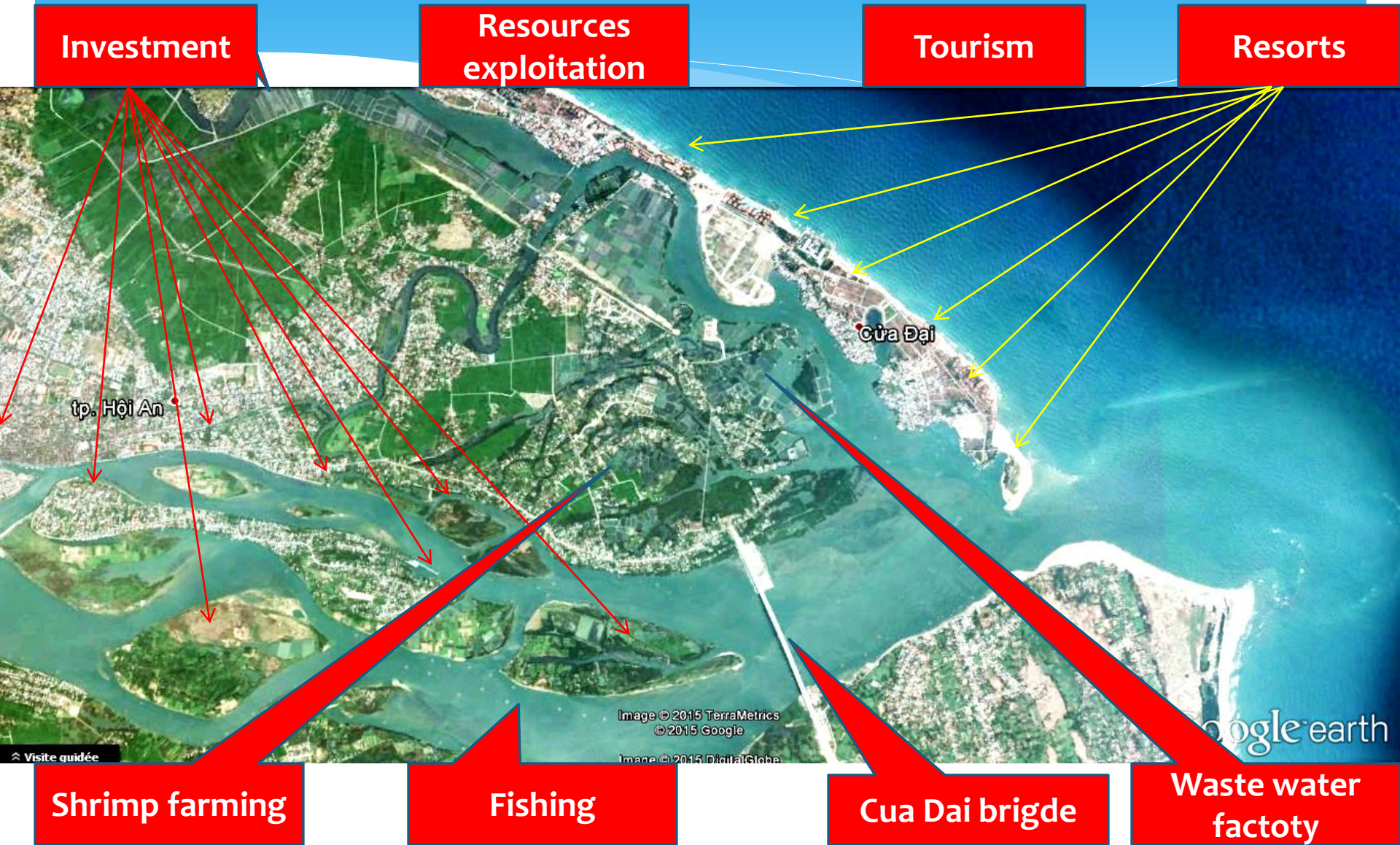
5. Vulnerability to disasters and specify the threats

ANALYSIS OF PROBLEMS



5. Vulnerability to disasters and specify the threats

Ecosystem are threatened by pressure of development



Impact from mainland: Pollution, Freshwater, sediment... etc



Coral bleaching



5. Vulnerability to disasters and specify the threats



- * There are around 10 typhoons combining floods a year in the central coast.
- * They are directly impacting on old house structure of the ancient town, making river-bank collapsed, beach erosion.
- * The sediment and pollution from mainland are attacking to coral reef and sea-grass beds in the islands.
- * Construction have been invested in river sand dune and beaches.

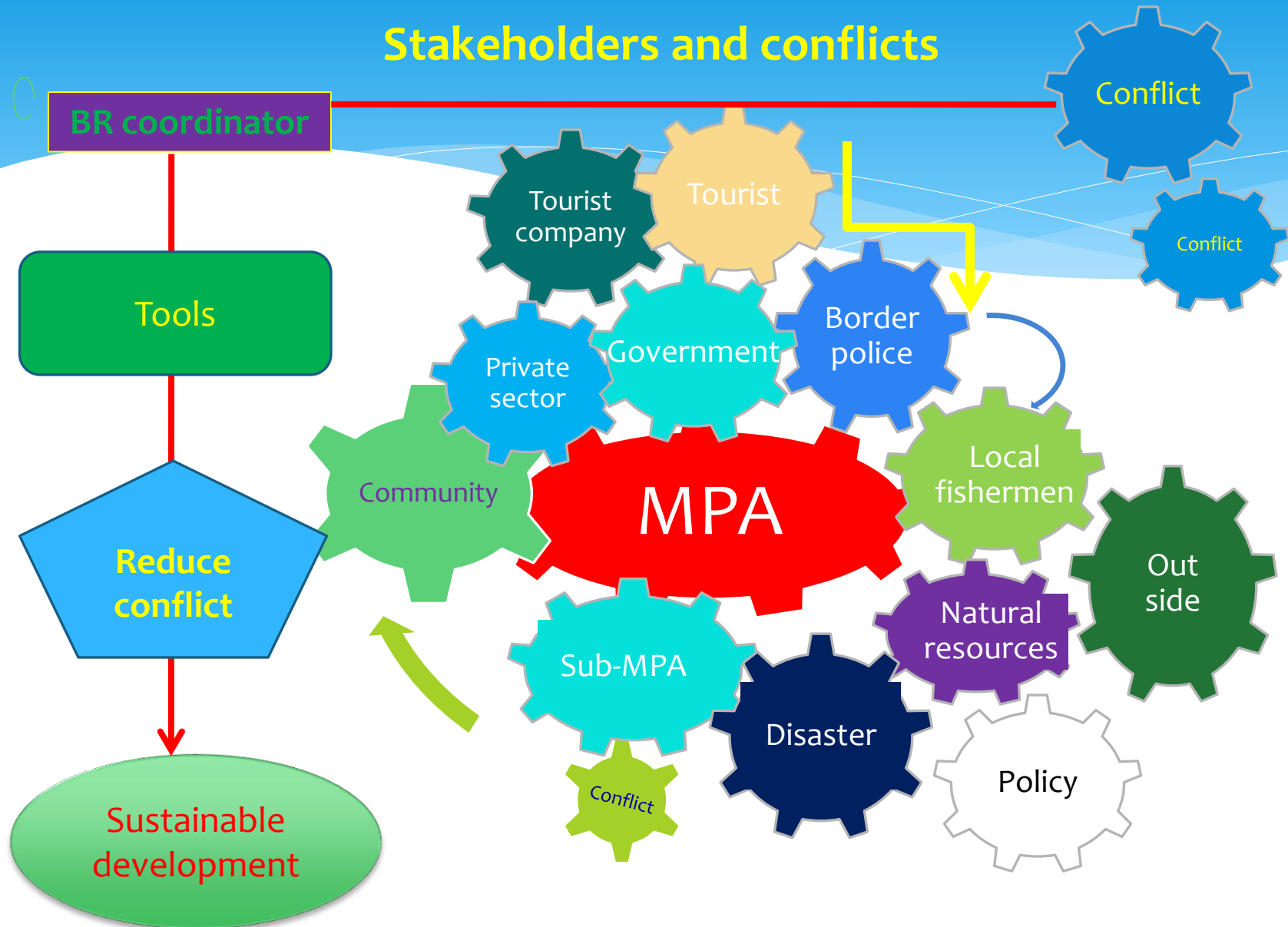
6. Current management systems of CBR

Balance between **Development** Vs. **Conservation**.



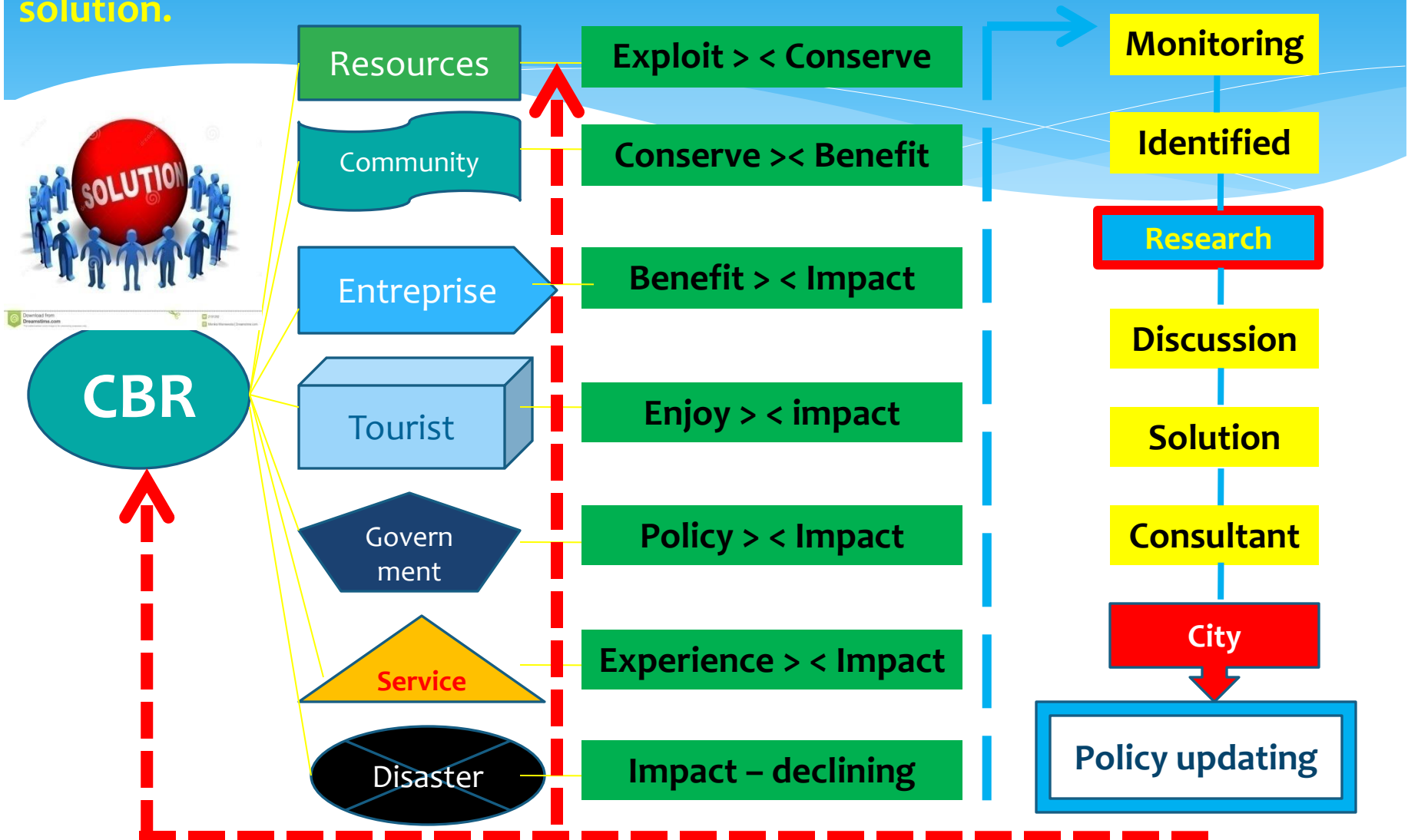
6. Current management systems of CBR

Stakeholders and conflicts



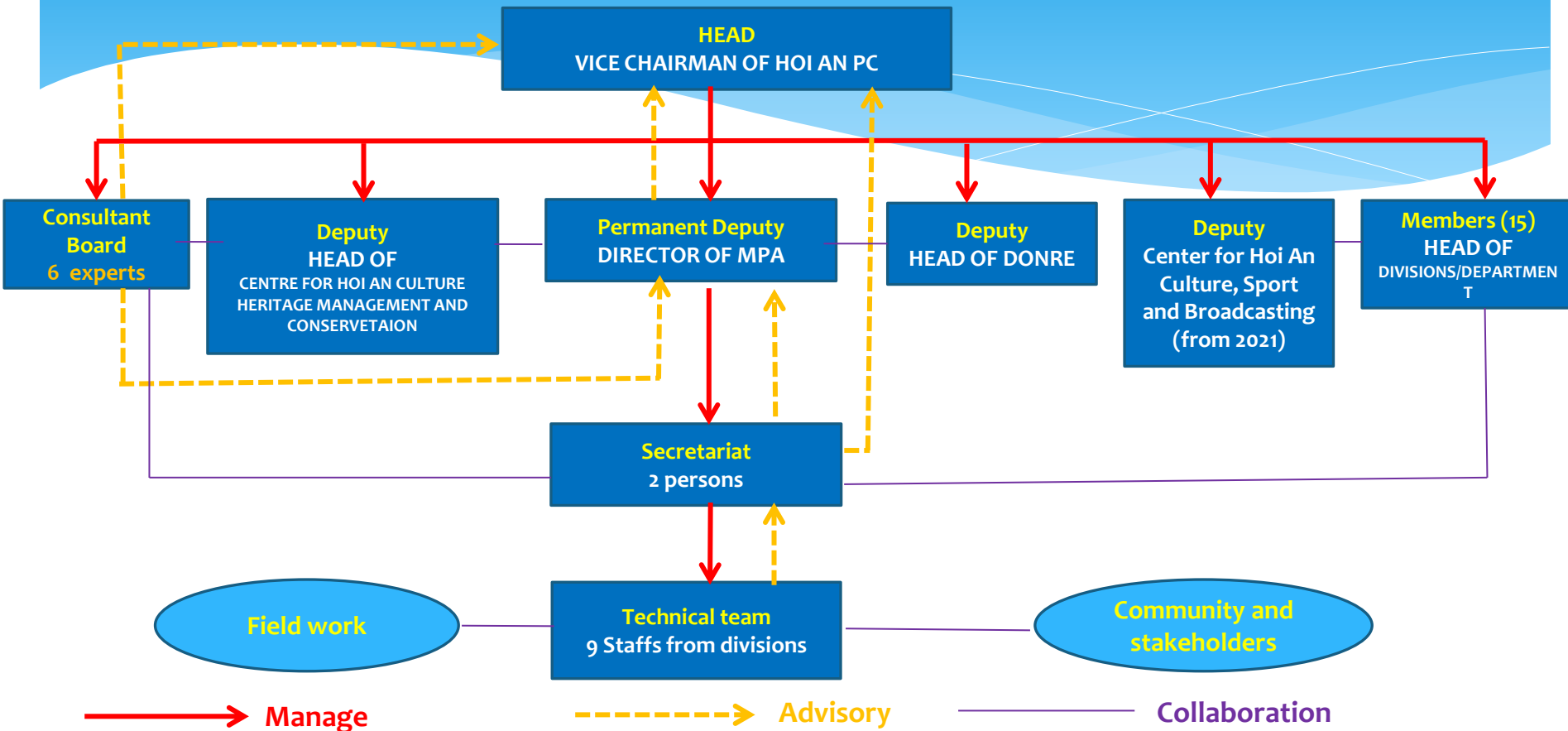
6. Current management systems of CBR

How can the biosphere reserve reducing the conflicts and find out the best solution.



6. Current management systems of CBR

STRUCTURE OF MANAGEMENT BOARD OF THE CU LAO CHAM – HOI AN BIOSPHERE RESERVER (2021)



- * Most of leader in the city were invited to be member of the management board of CBR
- * The CBR is trying to apply the effective methods for coordination all activities with stakeholder's participation

6. Current management systems of CBR

Applying the **SLIQ** mode for the BR.



Quality economy

Landscape
planning

Harmonious
life with
natural

Inter sectoral
coordination

System thinking



7. EFFORTS TO PRESERVE AND ENHANCE THE OUTSTANDING VALUE OF THE BR

× SWOT analysis

- The strategy of preserving and promoting the title of the WBR was determined timely as well as suitable to the specific conditions of Hoi An.

- Well-grown local people's livelihoods are associated with UNESCO's heritage title.

- Support from local people and young generation.

- Hoi An people are intelligent and creative in tourism development.

Strengthen

Convenient location, located in the Central Highlands Heritage corridor

Good resources (Nature and Humanities)

- Support from UNESCO and the international community support
- Tourists want to experience

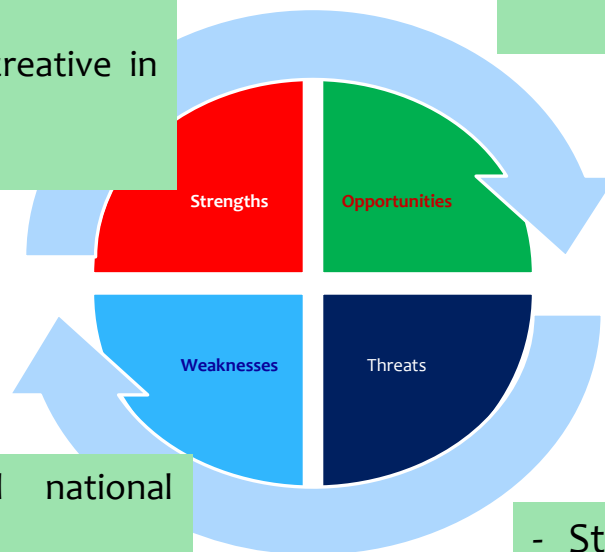
Inside

- Overlapping socio-economic and national defense development planning

- There are not substitutes for plastic bags and disposable plastic products yet

- It is unable to calculate the problem of heritage load and environmental capacity for natural ecosystems, including the human ecosystem

- There is not much coordination and benefit sharing in tourism development between businesses and local people



Decrease

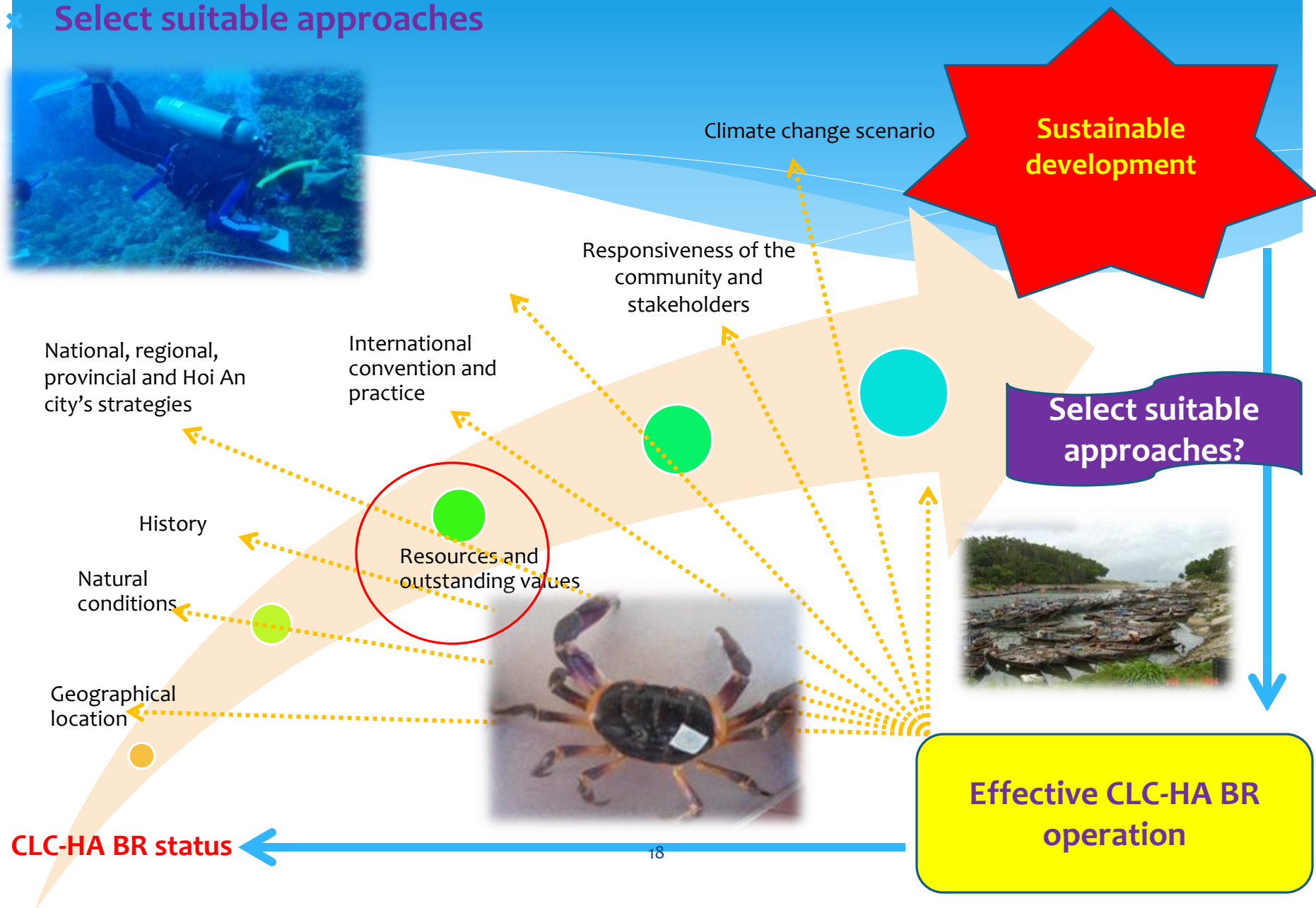
- Storms, floods and climate change are affecting the ancient town area and aquatic ecosystems

- Tourism is growing massively; low perceiving visitors

- Defense works built on Hon Lao island - Cu Lao Cham.

7. EFFORTS TO PRESERVE AND ENHANCE THE OUTSTANDING VALUE OF THE BR

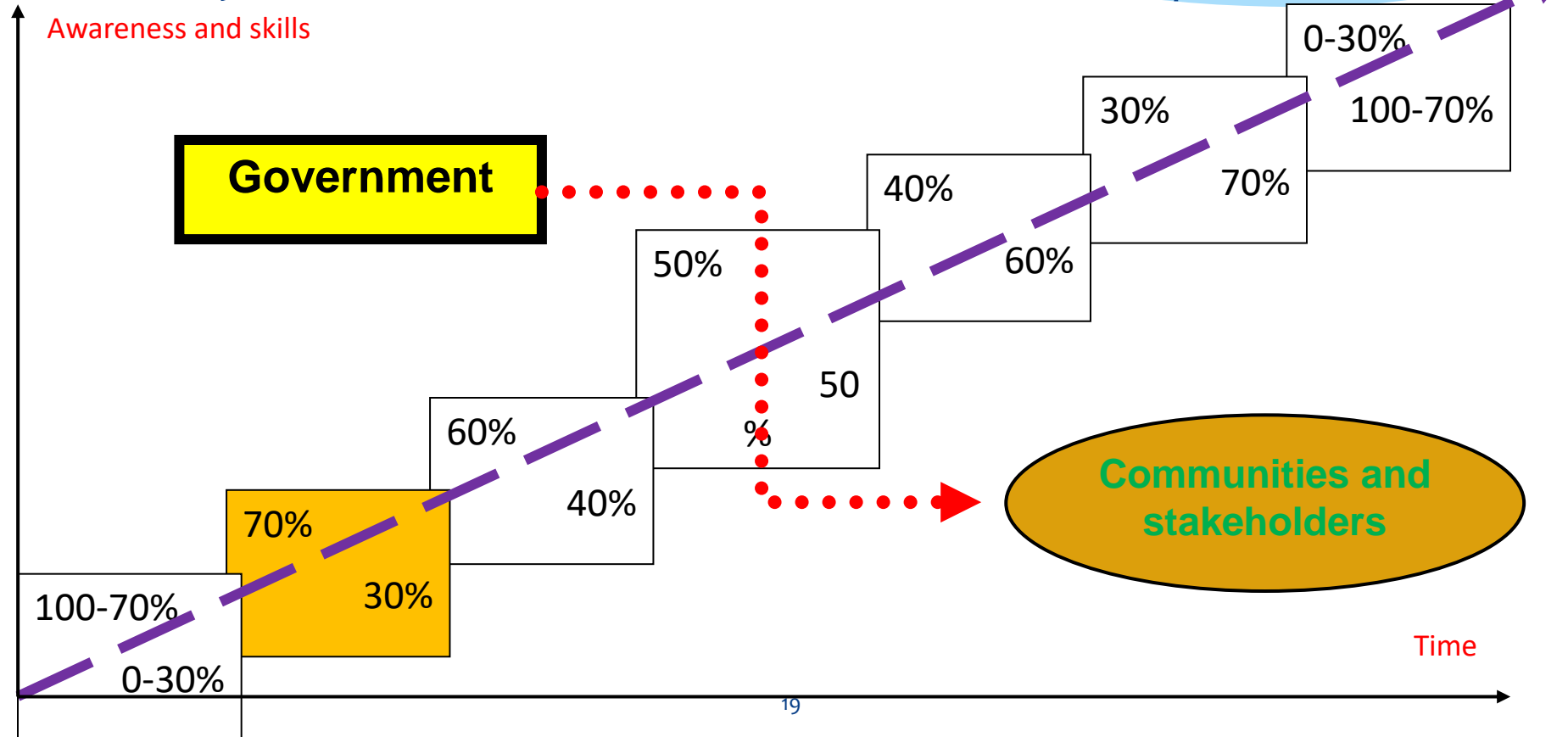
Select suitable approaches



8. NATURAL RESOURCES COLLABORATIVE MANAGEMENT

The concept of "co-governance " vs "Community-based co-management/management"

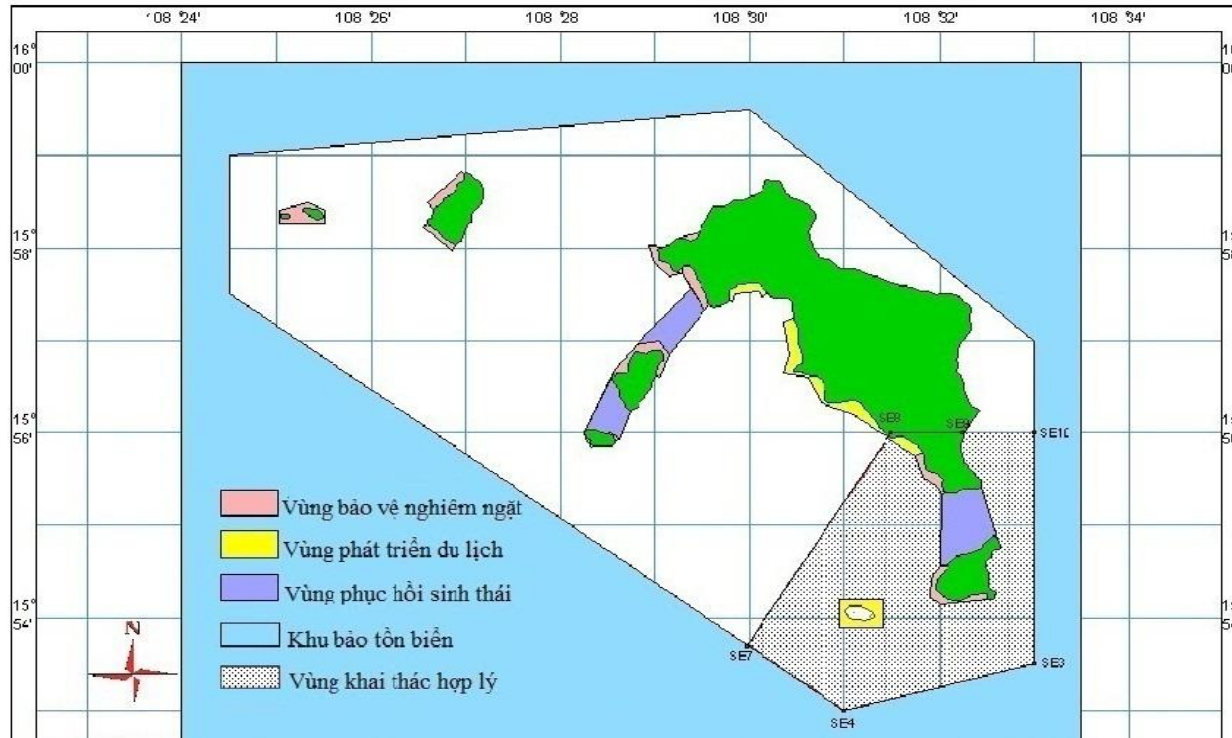
- * In essence, this is the process of sharing and transferring management rights from the government to the communities and stakeholders to enhance the efficiency of resource conservation and sustainable development.



8. NATURAL RESOURCES COLLABORATIVE MANAGEMENT

✦ The co-management sub-area of Bai Huong village marine conservation

BẢN ĐỒ PHÂN VÙNG TIỂU KHU ĐỒNG QUẢN LÝ BẢO TỒN BIỂN BÃI HƯƠNG



This is the first model in Vietnam in which a part of the water surface area and related resources of the reserve were handed over to the community itself organizing to manage, exploit and develop services for livelihood development. However, the conservation of BR natural resources values must be ensured.

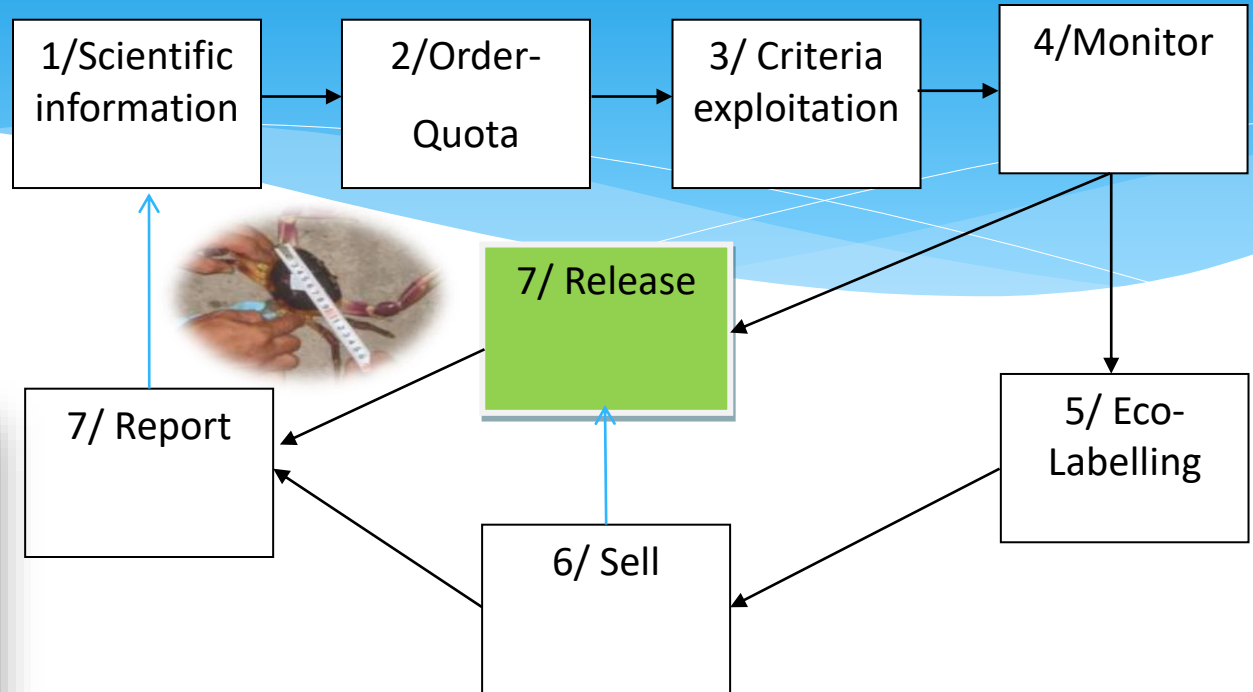
8. NATURAL RESOURCES COLLABORATIVE MANAGEMENT

- ✦ Model of community participating in coral restoration and coral diving service development



8. NATURAL RESOURCES COLLABORATIVE MANAGEMENT

✧ Model – Group of people who exploit as well as protect land crabs.



8. NATURAL RESOURCES COLLABORATIVE MANAGEMENT

Planning and organizing participatory activities

- * BR operational framework strategy; BR integrated management plan; BR Management regulation, Regulation of management of ecosystems of water coconut forest and other resources in the downstream of Thu Bon River, Co-management operation Regulation of the Sub-area of Bai Huong village marine conservation; Operation regulations of the CLC rock crabs exploitation and protection community group and many other conventions of other groups and community groups.



8. NATURAL RESOURCES COLLABORATIVE MANAGEMENT

Planning and organizing participatory activities



Mobilizing
Zero-waste
city

2019

Reducing
single-used
plastic
products

2019

Say no to
plastic straw
2018

Say no to
plastic bags
2009

Popular events



9. Current state of conservation and challenges

- Impacts from in and outside of CBR

Negative impact from up - down stream of Thu Bon river
to islands and ocean.



9. Current state of conservation and challenges

Conservation for development and Development for conservation



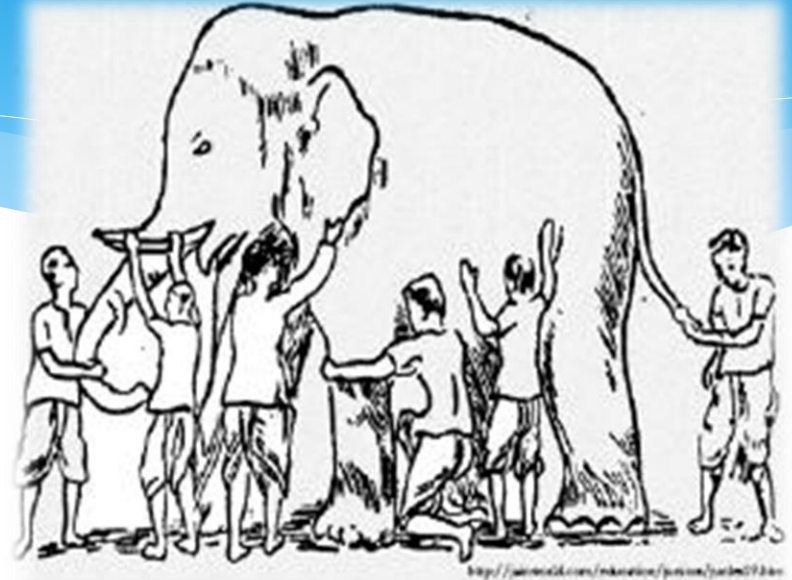
9. Current state of conservation and challenges

The 3 layers ecological embankment



10. LESSONS

- * **Firstly:** Building the scientific basis and arguments of the method of "co-governance of natural resources" is the priority, as a foundation for all activities of resource conservation.
- * **Secondly:** Developing pilot models, as well as assessing, and monitoring and supervision as a basis for replication.
- * **Thirdly:** Communicating, awareness raising for the community and stakeholders to thoroughly understand the existence, impact source and value of natural resources so that they can participate in a way responsible, effective under the "co-governance " mechanism.
- * **Fourth:** The roles, responsibilities, benefits, equality of stakeholders in specific mechanisms, policies or models by the "co-governance " approach need to be carefully analyzed to achieve the harmonization of benefits for the parties.



Thank you for listening!

