

Experiences and Lessons Learned from Implementing an Online Knowledge Platform: Asia Pacific Adaptation Network (APAN)

Augustine Kwan
Programme Manager (Knowledge Management and Outreach)
IGES Regional Centre
8 February 2017, Chiang Rai, Thailand



Introducing IGES and APAN

Who's IGES?

- Non-profit policy research institute promoting sustainable development across the Asia-Pacific region
- Established in 1998, IGES is headquartered in Hayama, Japan and has branch offices and desks in Bangkok, Beijing, Kansai, Kitakyushu, New Delhi, and Tokyo

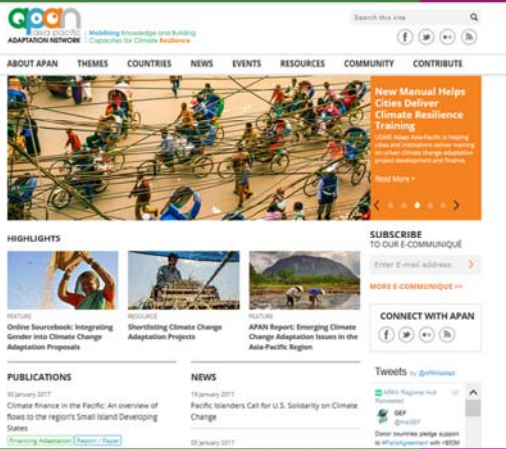
- IGES Regional Centre (*Bangkok*) – main arm to collaborate with local and international partners, including USAID, ADB, etc.

What's APAN?

- Regional network of practitioners responding to the growing and urgent need for climate change adaptation
- Capacity building; **knowledge management**; forum organization
- Supported (*financial and in-kind*) by the Ministry of the Environment, Japan, USAID, UNEP and others



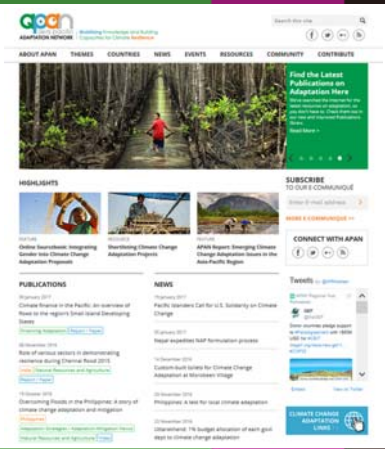
APAN Web Portal: <http://www.asiapacificadapt.net/>



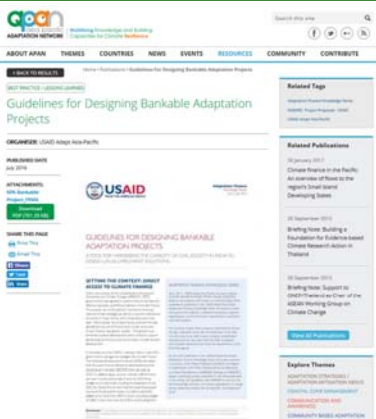
APAN Web Portal: Funding Structure

How's the APAN Web Portal funded?

- USAID Adapt Asia-Pacific, a climate financing project, sees APAN as pillar for sustaining its outcomes, knowledge
- Funded APAN knowledge management activities, including website development/management, implementing Community of Practice activities
- Work done through IGES, with allocated, dedicated KM and web staff
- Clear work plans and regular, quarterly and annual, reporting to USAID/RDMA on KM activities



APAN Web Portal: Key Features



- Regularly **update and maintain** the APAN web portal with the latest adaptation news and publications

- Use of Climate Tagger on the APAN Web Portal to **sort and streamline** climate change adaptation information to better reach end-users.

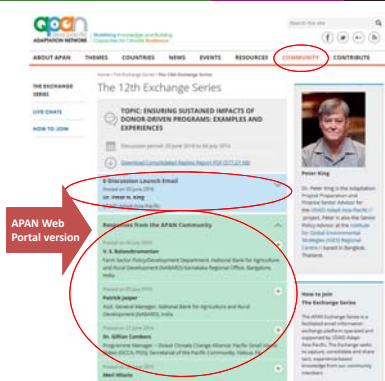
TAGS FROM **climatetagger**
adaptation strategies / adaptations / adaptive capacity / building types / climate change / climate change adaptation / decision-making / global climate / impacts on systems and sectors / international development / monitoring / sustainable livelihoods approaches / traditional knowledge / water resources / water supply



Fostering a Community of Practice (CoP)

What is the APAN Exchange Series?

- Regular email-based discussions**, reaching over 800 practitioners.
- Developed by IGES, supported by USAID Adapt Asia-Pacific
- Effective (and cost-effective)** CoP modality to engage governments and practitioners
- Getting responses **directly** in your email inboxes is **immediate and intimate**
- Capture experience-based knowledge from practitioners
- Encourage discussion, interaction and learning



APAN Web Portal version

Fostering a Community of Practice (CoP)

How to ensure successful regional knowledge sharing?

- Be current and be touch with global events
 - Discussion on gender and climate change adaptation ran during International Women's Day in March 2016
- Run online discussions prior to face-to-face events
- Online communities don't emerge spontaneously; need to nurture, identify CoP 'champions' to initiate/stimulate discussion
- Summarize conversation and develop/share key messages and reports

The 11th Exchange Series

Fostering a Community of Practice (CoP)

What is the APAN live online chat?

- Connect experts with practitioners (national/local govt officials) 'live'
- Text-based (typing) accommodates low bandwidth internet connections

Knowledge Platforms: 9 Points to Think About

- Being **clear on your objectives**
- Identifying a distinctive **niche**
- Narrowing down** your audience
- Understanding** your audience
- Generating **great content** (*good content doesn't create itself*)
- Creating **effective online communities** (*don't emerge spontaneously; time limit discussion*)
- Getting your **staffing** right
- Clarifying **governance arrangements**
- Creating a **sustainable business model** (*what's your funding model; demonstrate value; sponsorship*)



Source: "Planning a Successful Knowledge Platform: a 9-Point Checklist," Climate Knowledge Brokers Group, <https://www.youtube.com/watch?v=mcnIB4Gc8s>