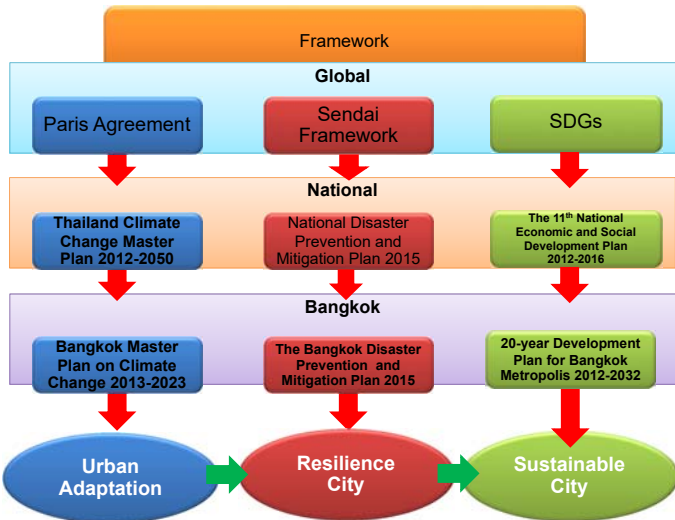


# Urban SDG Knowledge Platform

Mr. Jarupong Pengglieng  
 Chief of Vehicle Emission Control sub-division  
 Air Quality and Noise Management Division  
 Department of Environment  
 Bangkok Metropolitan Administration (BMA)

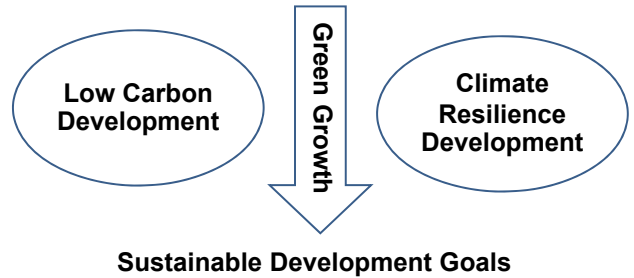
# Challenges

- Waste generation**  
9,900 tons / day,  
22% of Thailand's  
(2014)
- Wastewater to be treated**  
1,112,000 m<sup>3</sup> / day  
46 % of total wastewater  
generated  
(2014)
- 8.6 million registered cars**  
Increase 5% each year  
6 million trips of car  
usage/day  
(2014)
- PM<sub>10</sub> on roadside**  
exceeded the 24-hour  
average  
(120 µg/m<sup>3</sup>) in some areas.  
(2014)
- Fuel consumption**  
353,707 million MJ.  
Electricity consumption  
32,605.44 GWh  
(2013)
- GHG Emission 42.65**  
million tons (2007)



## The 20-year Bangkok Development Plan Bangkok Master Plan on Climate Change 2013-2023

### The Bangkok Resilience Plan



# Green Growth Project in Bangkok

Project Period	Objective	Scope of Study
12 months (July 2014 - July 2015)	To assess the impact of urban green growth and sustainability policies on economic performance and environmental quality	<ul style="list-style-type: none"> <li>Green Manufacturing and R &amp; D</li> <li>Sustainable Urban Form and Mobility</li> <li>Strategies for Climate Adaptation</li> <li>Infrastructure for Logistics</li> <li>Natural Resource Consumption</li> <li>The Role of Civil Society in Green Growth</li> </ul>

## Green Growth Project in Bangkok

### Output

**The Report of Green Growth in Bangkok**



## Strategies Boosting Green Growth in the BMR

- Vertical and horizontal co-operation among various government in the BMR
- The involvement of all stakeholders
- Financing options
- Capacity-building activities
- Role and contributions of international co-operation agencies

## Low Carbon and Resilient Bangkok

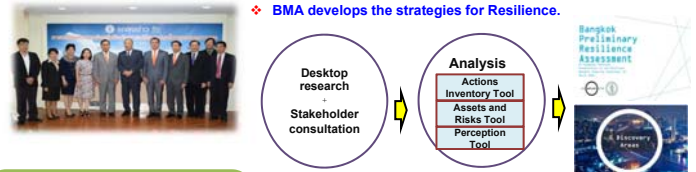
## Concrete Action on Climate Resilience

Bangkok Master Plan on Climate Change 2013-2023



## Bangkok Resilience City

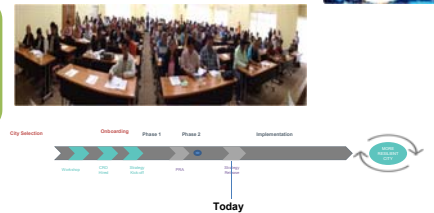
BMA develops the strategies for Resilience.



Bangkok was selected as one of the first 32 cities to partner with 100 Resilient Cities (100RC) pioneered by the Rockefeller Foundation.

The initiative is designed to enable 100 cities from around the world to better address the increasing shocks and stresses of the 21<sup>st</sup> century.

- BMA received technical support and resources from 100 Resilient Cities
- to hire a Chief Resilience Officer (CRO) and develop and implement a City Resilience Strategy



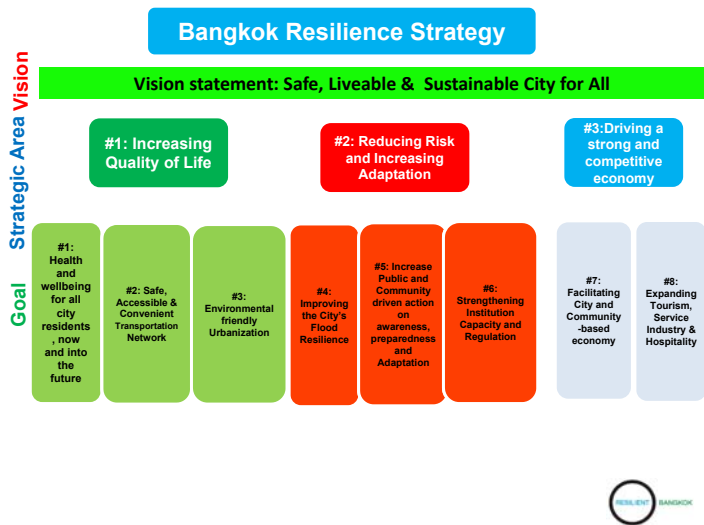
- How can Bangkok be better protected from flooding now and into the future?
- How can Bangkok residents be better supported to reduce the impacts of shocks and bounce back stronger?
- How can mobility be better improved across Bangkok?
- How can the economic prosperity and equality of Bangkok residents be improved?
- How can the health and wellbeing of Bangkok residents be better supported?

Bangkok PRA 2016

## 5 Discovery Areas

- Flood Prevention
- Reduction of the Impacts of Shocks
- Mobility
- Economic Prosperity and Equity
- Health and Wellbeing

## Bangkok Resilience Strategy



## Challenges Ahead to Achieve SDG

- Inclusive policy
- Coordinated actions
- Database
- Raising awareness and participation
- Networking
- Capacity building

Thank you for your kind attention